

be:sample
be:colorful
be:flexible

bejot:studio design

Możliwości zastosowania tkanin w poszczególnych produktach
Possibilities of using fabrics in individual products
Verfügbarkeit von Stoffen für einzelne Produkte

	1 grupa cenowa / price group / Preisgruppe					2 grupa cenowa / price group / Preisgruppe						
	bond	fenno	keimo	nice	sawana	charles	era	fighter	pastel	roccia	sawana pik	valencia
acoustic peak	•	•	•			•		•	•	•		
beachhouse		•						•	•	•	•	
booi		•				•		•	•	•	•	•
booi workstation siedzisko/seat/sitz		•				•		•	•	•	•	
booi workstation ścianka/wall/wand		•			•	•		•	•	•	•	
cave		•				•			•	•	•	
ceo												
clubin	•	•	•		•	•		•	•	•	•	
corr	•	•	•	•	•	•	•	•	•	•	•	•
cube	•	•	•		•	•		•	•	•	•	•
cube 3D	•	•	•		•			•	•	•		•
dual	•	•	•	•	•	•	•	•	•	•	•	•
eggo	•	•	•	•	•	•	•	•	•	•	•	•
eleven	•	•	•	•	•	•	•	•	•	•	•	•
epocc	•	•	•		•	•	•	•	•	•	•	
fendo	•	•	•		•	•		•	•	•	•	•
hens	•	•		•		•	•	•	•	•		
in access		•	•		•	•		•	•	•	•	
kyos	•	•	•	•	•	•	•	•	•	•	•	•
leaf_pod ścianka/wall/wand												
leaf_pod sofa	•	•	•		•	•	•	•	•	•	•	•
legvan	•	•	•		•	•		•	•	•	•	•
lift	•	•	•	•	•	•	•	•	•	•		
lupp	•		•		•	•	•	•	•	•		
lumi	•	•	•		•	•	•	•	•	•	•	•
mate	•	•	•	•	•	•	•	•	•	•	•	
milla	•	•	•	•	•	•	•	•	•	•	•	•
momo	•	•	•	•	•	•	•	•	•	•	•	•
momo IT2	•	•						•	•	•		
mork	•	•	•	•	•	•	•	•	•	•	•	•
orte	•	•	•	•	•	•	•	•	•	•	•	•
orte 3D	•	•	•		•	•	•	•		•		•

- Kropka oznacza, że produkt występuje w danej tkaninie.
A point means that the product can be made in the fabric.
Das Produkt ist im angezeigten Stoff erhältlich.

3 grupa cenowa / price group / Preisgruppe					4 grupa cenowa / price group / Preisgruppe			5 grupa cenowa / price group / Preisgruppe			
valencia SD	blazer	easy	silvertex	synergy	remix	skóra /leather /leder	heritage	accessoire	oceanic	steelcut	
	•	•		•	•				•	•	acoustic peak
	•			•	•				•	•	beachhouse
•	•	•		•	•	•	•		•	•	booi
	•	•		•	•	•	•		•	•	booi workstation siedzisko/seat/sitz
	•			•	•		•		•	•	booi workstation ścianka/wall/wand
	•			•	•	•	•	•	•	•	cave
	•			•	•	•					ceo
	•	•	•	•	•	•	•	•	•	•	clubin
•	•	•	•	•	•	•	•	•	•	•	corr
•	•	•	•	•	•	•	•	•	•	•	cube
•	•	•	•	•	•	•					cube 3D
•	•	•	•	•	•	•	•		•	•	dual
•	•	•	•	•	•	•	•	•	•	•	eggo
•	•	•	•	•	•	•	•	•	•	•	eleven
	•	•	•	•	•	•	•	•	•	•	epocc
•	•	•	•	•	•	•	•		•	•	fendo
	•	•	•	•	•	•	•	•	•	•	hens
	•	•	•	•	•	•	•	•	•	•	in access
•	•	•	•	•	•	•	•	•	•	•	kyos
	•			•							leaf_pod ścianka/wall/wand
•	•	•	•	•	•	•	•	•	•	•	leaf_pod sofa
•	•	•	•	•	•	•	•	•	•	•	legvan
•	•	•	•	•	•	•	•	•	•	•	lift
	•	•		•	•	•				•	lupp
•	•	•	•	•	•	•	•	•	•	•	lumi
	•	•	•	•	•	•	•	•	•	•	mate
•	•	•	•	•	•	•	•	•	•	•	milla
•	•	•	•	•	•	•	•	•	•	•	momo
					•	•	•		•	•	momo 1T2
•	•	•	•	•	•	•	•	•	•	•	mork
•	•	•	•	•	•	•	•	•	•	•	orte
•	•	•	•	•	•	•					orte 3D

- Kropka oznacza, że produkt występuje w danej tkaninie.
A point means that the product can be made in the fabric.
Das Produkt ist im angezeigten Stoff erhältlich.

3 grupa cenowa / price group / Preisgruppe					4 grupa cenowa / price group / Preisgruppe			5 grupa cenowa / price group / Preisgruppe			
valencia SD	blazer	easy	silvertex	synergy	remix	skóra /leather /leder	heritage	accessoire	oceanic	steelcut	
•	•	•	•	•	•	•	•	•	•	•	ox:co
•	•	•	•	•	•	•	•	•	•	•	ox:co s
•	•	•	•	•	•	•	•	•	•	•	plint
•	•	•	•	•	•	•	•	•	•	•	plint ścianka/wall/wand
•	•	•	•	•	•	•	•	•	•	•	point
•	•	•	•	•	•	•	•	•	•	•	point 3D
•	•	•	•	•	•	•	•	•	•	•	quadra
•	•	•	•	•	•	•	•	•	•	•	quadra ścianka/wall/wand
•	•	•	•	•	•	•	•	•	•	•	quadra phonebox
•	•	•	•	•	•	•	•	•	•	•	quadra standing box
•	•	•	•	•	•	•	•	•	•	•	saar
•	•	•	•	•	•	•	•	•	•	•	selva
•	•	•	•	•	•	•	•	•	•	•	selva_pod
•	•	•	•	•	•	•	•	•	•	•	shell
•	•	•	•	•	•	•	•	•	•	•	silent block
•	•	•	•	•	•	•	•	•	•	•	sky_line
•	•	•	•	•	•	•	•	•	•	•	social swing siedzisko/seat/sitz
•	•	•	•	•	•	•	•	•	•	•	social swing double / round
•	•	•	•	•	•	•	•	•	•	•	social swing ławka/bench/bank
•	•	•	•	•	•	•	•	•	•	•	spin
•	•	•	•	•	•	•	•	•	•	•	string
•	•	•	•	•	•	•	•	•	•	•	treehouse
•	•	•	•	•	•	•	•	•	•	•	treehouse ścianka tylna / back wall / rückwand
•	•	•	•	•	•	•	•	•	•	•	u_floe
•	•	•	•	•	•	•	•	•	•	•	umm
•	•	•	•	•	•	•	•	•	•	•	vector
•	•	•	•	•	•	•	•	•	•	•	vieni
•	•	•	•	•	•	•	•	•	•	•	voo voo
•	•	•	•	•	•	•	•	•	•	•	voo voo 9xx
•	•	•	•	•	•	•	•	•	•	•	wei
•	•	•	•	•	•	•	•	•	•	•	zip

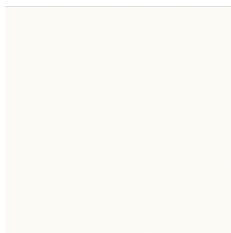
:2

grupa cenowa Preicegruppe price group

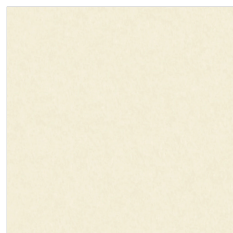
charles SD

* standardowa oferta Bejot
Bejots Standardangebot
Standard Bejot offer

edition: 04.2021
price group: 2



IVORY | CH007



CREAM | CH008



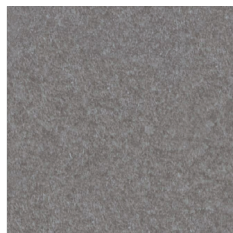
SAND | CH006*



MUSHROOM | CH009*



PELICAN | CH005*



CASTOR | CH003



TRUFFLE | CH004*



TEAK | CH012



AKACIA | CH041*



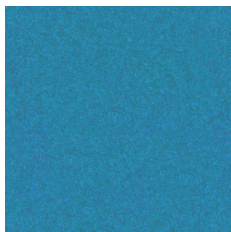
LEAF | CH043



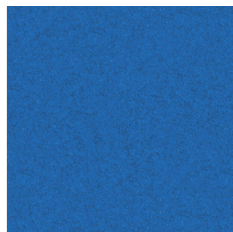
OLIVE | CH042



KHAKI | CH044*



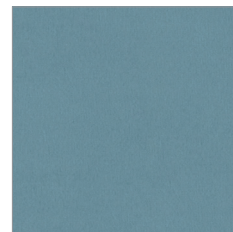
MALIBU | CH036



DENIM | CH035



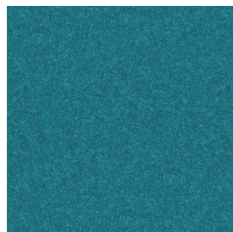
MIST | CH038*



CADET | CH034*



PETROL | CH039



CLOUD | CH037



GARDEN | CH045*



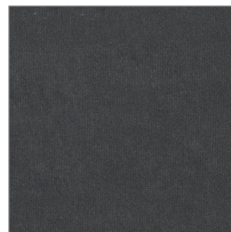
GREENNESS | CH040*



COBALT | CH032*



IMPERIAL | CH033*



PEWTER | CH002*

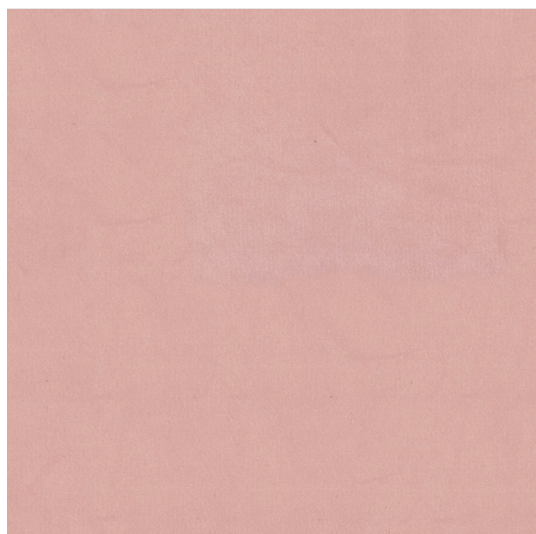


BLACK | CH001*

Zdjęcia kolorów produktów na stronie,
mogą odbiegać od rzeczywistych.

Colours of products presented on this
website may differ from the actual colours.

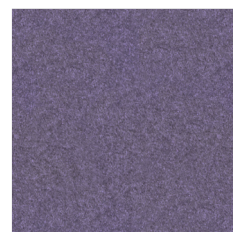
Die Bildern der Farben der Produkte auf der
Website können vom Original abweichen.



MELLOW | **CH030***



IRIS | CH029



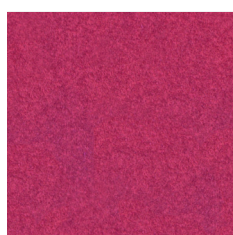
GRAPE | CH028



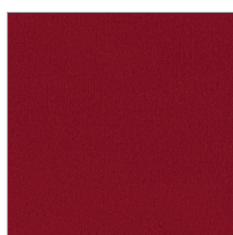
CONFETTI - CH020



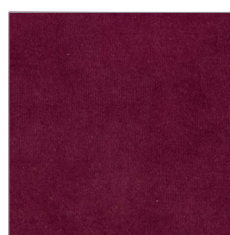
DAHLIA | CH027



MAGENTA | CH026



RASBERRY | **CH022***



VINO | **CH024***



BURGUNDY | CH025



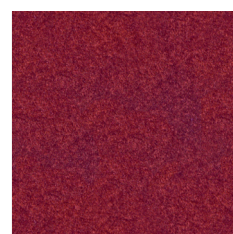
RED | CH021



ORANGE | CH019



NOSTALGIA | CH031



WATERMELON | CH023



RUST | CH018



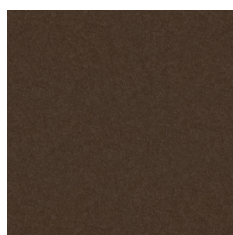
GINGER | CH017



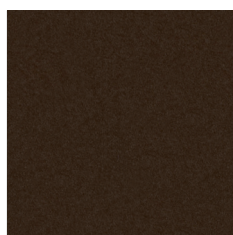
BRONZE | CH010



CARMEL | CH016



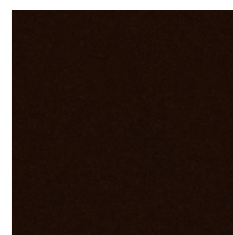
NUT | CH011



AUTUMN | CH015



CHESTNUT | CH013



CHOCOLATE | CH014



apretura wodoodporna
wasserdichtes Finish
water repellent

pl:

Skład

100% poliester

Waga

433 g/m²

Szerokość rolki

140 cm

Odporność na ścieranie

90 000 cykli Martindale'a
(BS EN ISO 12947-2:2000)

Pilling

5 (EN ISO 12945-2:2000)

Odporność na światło

5 (ISO 105-B02)

Odporność koloru na tarcie

Mokre: 4-5 (UNI EN ISO 105-X12)
Suche: 4-5 (UNI EN ISO 105-X12)

Certyfikaty trudnopalności

• DIN EN 1021-1

Czyszczenie



Tkanina Charles ze względu na strukturę (długi włos), podczas użytkowania może układać się w charakterystyczny dla tkanin welurowy sposób, tworzący wrażenie różnych odcieni tapicerki.

Dopuszcza się występowanie różnic odcieni pomiędzy poszczególnymi partiami produkcyjnymi.

de:

Zusammensetzung

100% Polyester

Gewicht

433 g/m²

Rollenbreite

140 cm

Scheuerfestigkeit

90 000 Zyklen Martindale
(BS EN ISO 12947-2:2000)

Pilling

5 (EN ISO 12945-2:2000)

Lichtechtheit

5 (ISO 105-B02)

Reibechtheit

Nass: 4-5 (UNI EN ISO 105-X12)
Trocken: 4-5 (UNI EN ISO 105-X12)

Feuersicherung

• DIN EN 1021-1

Reinigung



Der Stoff Charles kann aufgrund seiner Struktur (langes Haar) im Gebrauch veloursartig angeordnet werden, wodurch der Eindruck von verschiedenen Polstertönen entsteht.

Farbtonunterschiede zwischen einzelnen Produktionschargen sind zulässig.

en:

Composition

100% Polyester

Weight

433 g/m²

Roll width

140 cm

Abrasion resistance

90 000 Martindale cycles
(BS EN ISO 12947-2:2000)

Pilling

5 (EN ISO 12945-2:2000)

Light fastness

5 (ISO 105-B02)

Fastness to rubbing

Wet: 4-5 (UNI EN ISO 105-X12)
Dry: 4-5 (UNI EN ISO 105-X12)

Flammability

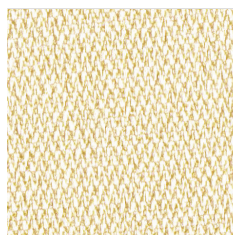
• DIN EN 1021-1

Cleaning



Charles fabric, due to its structure (long hair), can be arranged in a velour way while being used, creating the impression of different shades of upholstery.

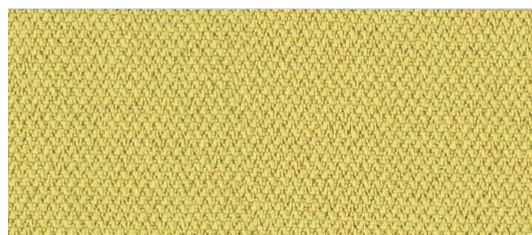
Shade differences between individual production batches are allowed.



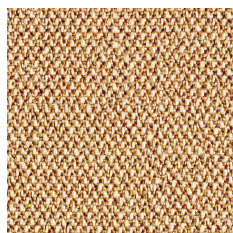
CSE30



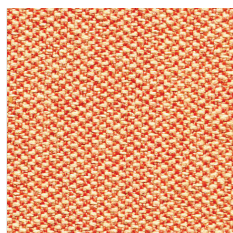
CSE01



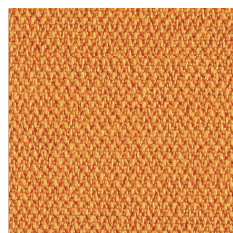
CSE03



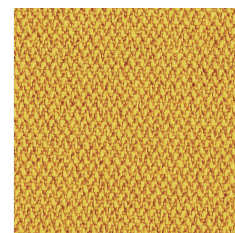
CSE31



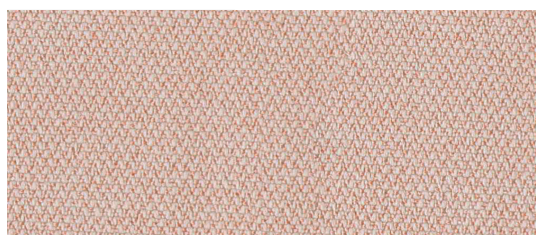
CSE25



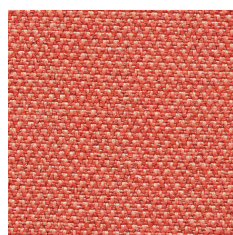
CSE27



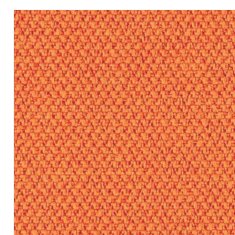
CSE32



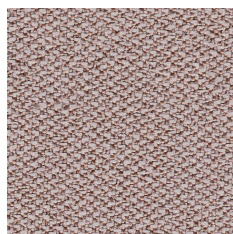
CSE19



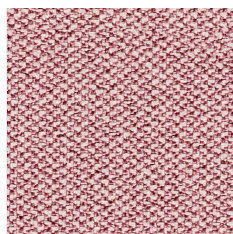
CSE26



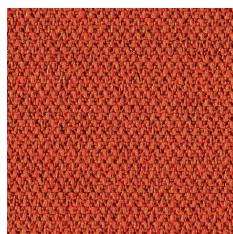
CSE05



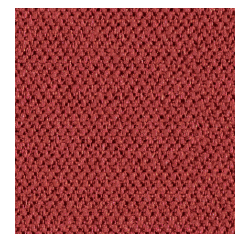
CSE23



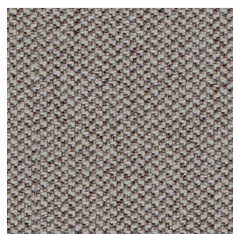
CSE24



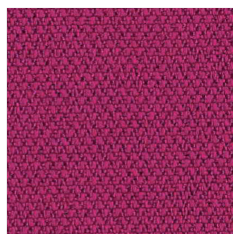
CSE29



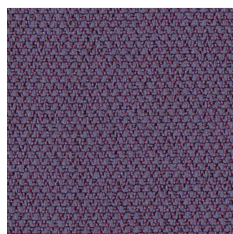
CSE28



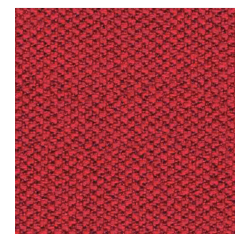
CSE02



CSE17



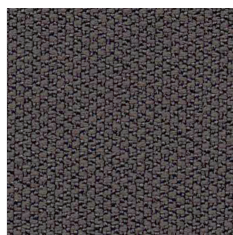
CSE09



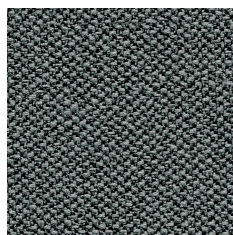
CSE06



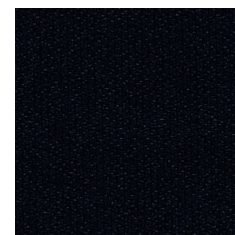
CSE13



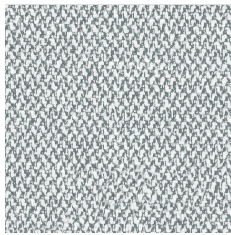
CSE21



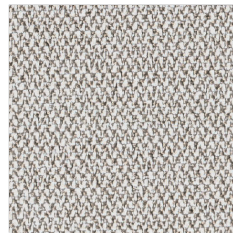
CSE44



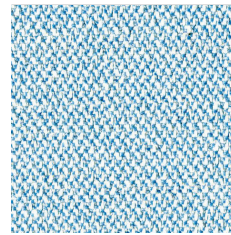
CSE14



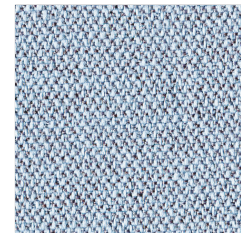
CSE46



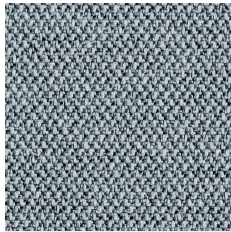
CSE41



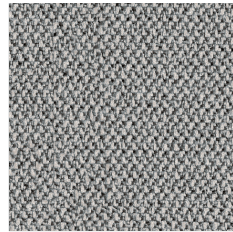
CSE38



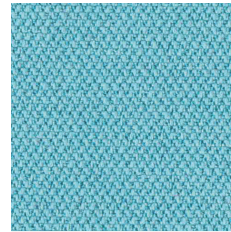
CSE39



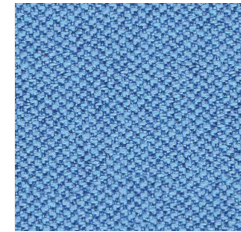
CSE43



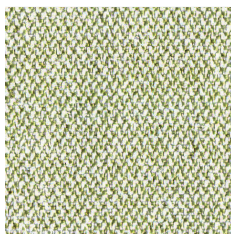
CSE11



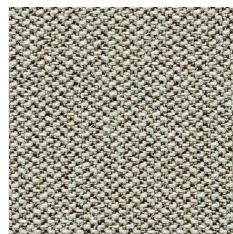
CSE20



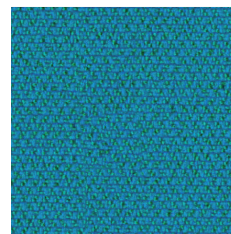
CSE08



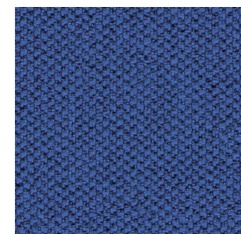
CSE33



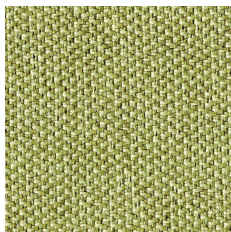
CSE45



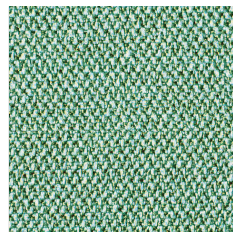
CSE10



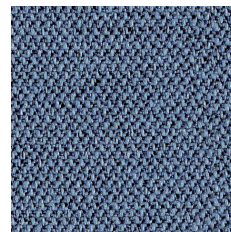
CSE12



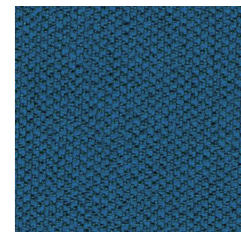
CSE34



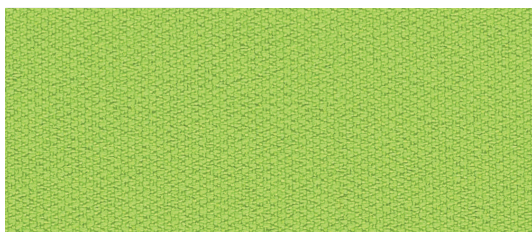
CSE36



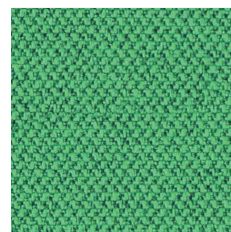
CSE42



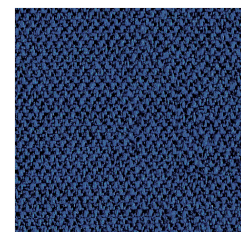
CSE15



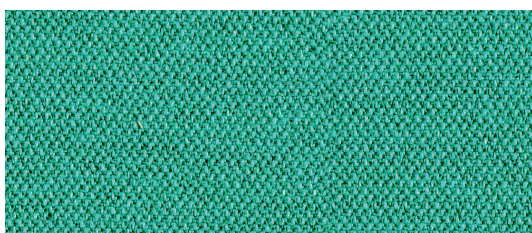
CSE07



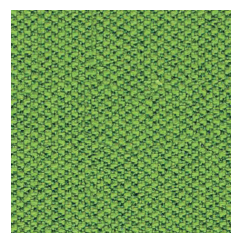
CSE18



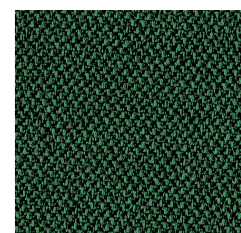
CSE40



CSE37



CSE16



CSE35

pl:

Skład

100% poliester

Waga

320 g/m² ± 5%

Szerokość rolki

140 cm

Odporność na ścieranie

≥100 000 cykli Martindale'a
(BS EN ISO 12947-2:2016)

Odporność na światło

5 (ISO 105-B02)

Odporność koloru na tarcie

Mokre: 4 (ISO 105-X12)
Suche: 4 (ISO 105-X12)

Certyfikaty trudnopalności

- EN 1021-1:2014
- EN 1021-2:2014
- BS 7176 Low Hazard

Czyszczenie

Odkurzaj regularnie. Przetrzyj wilgotną szmatką z wodą i mydłem lub użyj odpowiedniego szamponu do tapicerki. Dla lepszego czyszczenia użyj pary, wybielacza, alkoholu lub profesjonalnego czyszczenia chemicznego. Można prać w 60°C.

Dopuszcza się występowanie różnic odcieni pomiędzy poszczególnymi partiami produkcyjnymi.

de:

Zusammensetzung

100% polyester

Gewicht

320 g/m² ± 5%

Rollenbreite

140 cm

Scheuerfestigkeit

≥100 000 Zyklen Martindale
(BS EN ISO 12947-2:2016)

Lichtechtheit

5 (ISO 105-B02)

Reibechtheit

Nass: 4 (ISO 105-X12)
Trocken: 4 (ISO 105-X12)

Feuersicherung

- EN 1021-1:2014
- EN 1021-2:2014
- BS 7176 Low Hazard

Reinigung

Regelmässig staubsaugen. Dazu mit einem feuchten Tuch abwischen, oder mit einem speziellen Polsterschaum behandeln. Verwenden Sie für eine gründlichere Reinigung Dampf, Bleichmittel, Alkohol oder eine professionelle chemische Reinigung. Washbar bis 60°C.

Farbtonunterschiede zwischen einzelnen Produktionschargen sind zulässig.

en:

Composition

100% polyester

Weight

320 g/m² ± 5%

Roll width

140 cm

Abrasion resistance

≥100 000 Martindale cycles
(BS EN ISO 12947-2:2016)

Light fastness

5 (ISO 105-B02)

Fastness to rubbing

Wet: 4 (ISO 105-X12)
Dry: 4 (ISO 105-X12)

Flammability

- EN 1021-1:2014
- EN 1021-2:2014
- BS 7176 Low Hazard

Cleaning

Vacuum regularly. Wipe with a damp cloth using soap and water or use proprietary upholstery shampoo. For deeper cleaning use steam, bleach, alcohol or professionally dry clean. Can be washed at 60°C.

Shade differences between individual production batches are allowed.

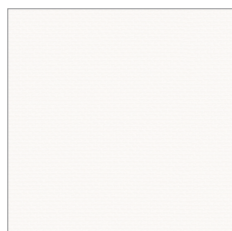
:3

grupa cenowa Preicegruppe price group

silvertex SD

* standardowa oferta Bejot
Bejots Standardangebot
Standard Bejot offer

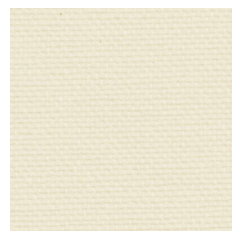
edition: 04.2021
price group: 3



SV289*



4004



2090



1077



SV001*



0002



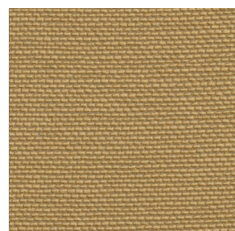
SV009*



4012



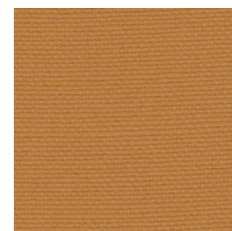
1051



1078



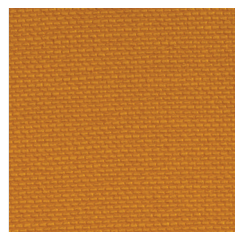
1010



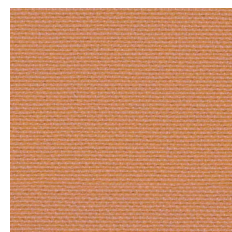
2105



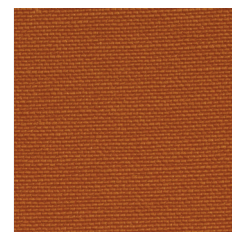
2093



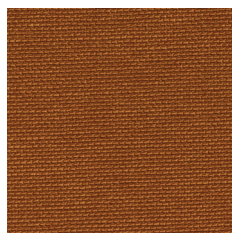
SV065*



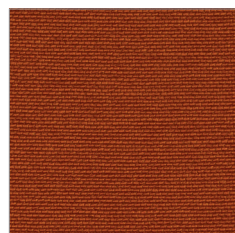
SV662*



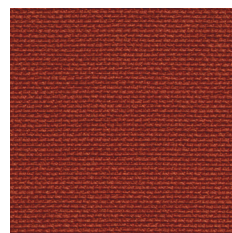
0013



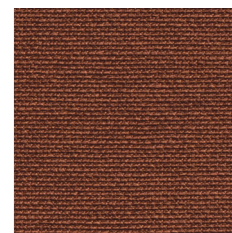
2003



SV661*



2012



1014

Zajęcia kolorów produktów na stronie,
mogą odbiegać od rzeczywistych.

Colours of products presented on this
website may differ from the actual colours.

Die Bildern der Farben der Produkte auf der
Website können vom Original abweichen.

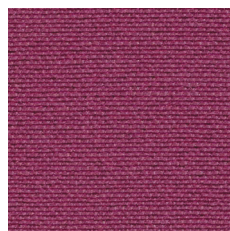
silvertex SD

* standardowa oferta Bejot
Bejots Standardangebot
Standard Bejot offer

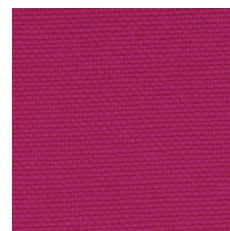
edition: 04.2021
price group: 3



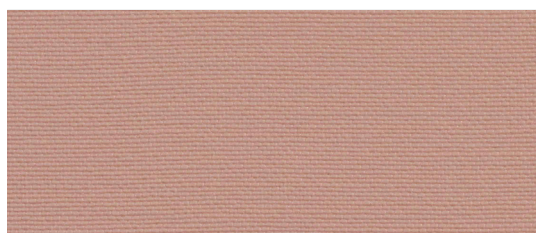
2099



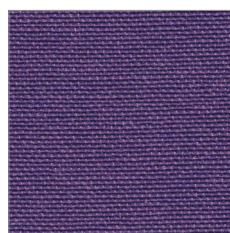
2097



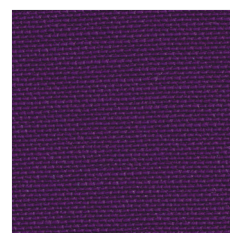
7002



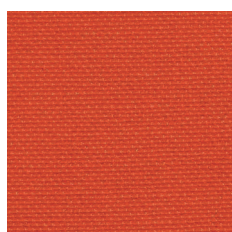
2098



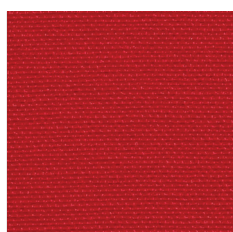
SV214*



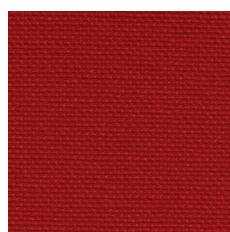
7001



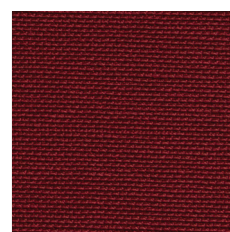
2096



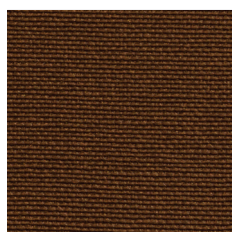
2095



SV211*



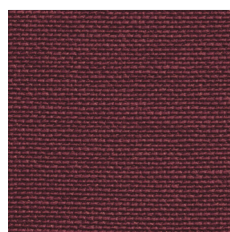
2064



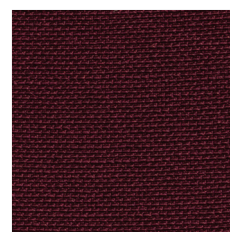
0073



SV424*



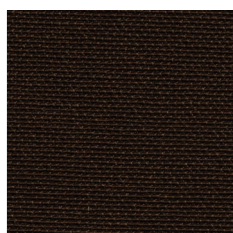
2016



SV064*



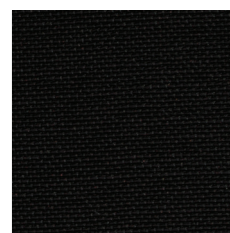
4003



0005



9002



SV091*

Zajęcia kolorów produktów na stronie,
mogą odbiegać od rzeczywistych.

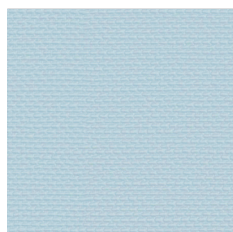
Colours of products presented on this
website may differ from the actual colours.

Die Bildern der Farben der Produkte auf der
Website können vom Original abweichen.

silvertex SD

* standardowa oferta Bejot
Bejots Standardangebot
Standard Bejot offer

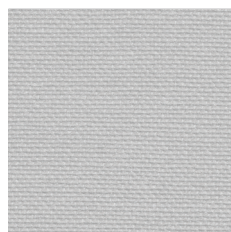
edition: 04.2021
price group: 3



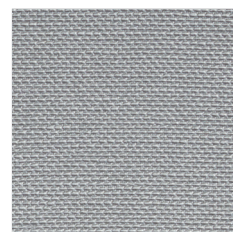
SV 213*



2102



2101



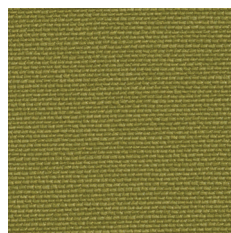
SV401*



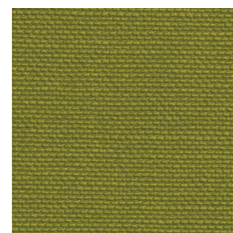
2091



2092



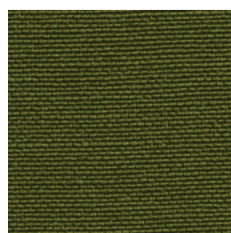
5019



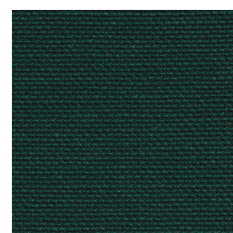
SV508*



5009



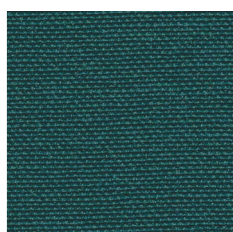
SV010*



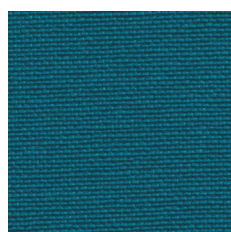
SV563*



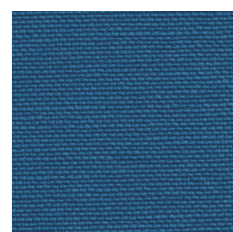
5010



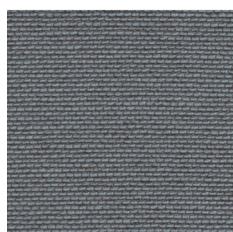
2100



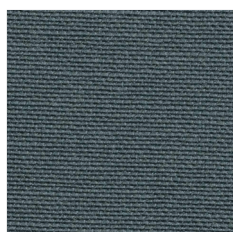
SV031*



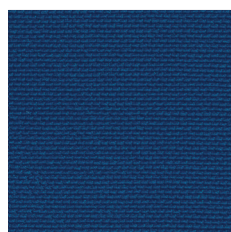
3066



4011



2094



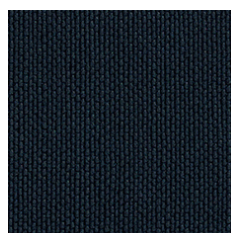
SV067*



4010



SV402*



3068



SV307*

Zdjęcia kolorów produktów na stronie,
mogą odbiegać od rzeczywistych.

Colours of products presented on this
website may differ from the actual colours.

Die Bildern der Farben der Produkte auf der
Website können vom Original abweichen.



odporna na ścieranie
exzellente Abriebfestigkeit
abrasion resistant



odporna na promienie UV
lichtechtheit
UV resistant



odporna na mikroorganizmy
antimikrobiell ausgerüstet
mildew resistant



wodoodporna
wasserabweisend
impermeability



odporna na produkty chemiczne
chemikalienbeständig
chemical resistant



odporna na krew i urynek
resistenz gegen Blut und Urin
resistant to blood and urine



trudnozapałna
flammschützend ausgerüstet
flame retardant



odporna na niskie temperatury
kältebruch resistent
low temperature resistant

pl:

PERMABLOCK to sprawdzona powłoka chroniąca winyl, która tworzy mocną i skuteczną barierę przed największymi problemami występującymi w branży hotelarskiej i służbie zdrowia.

Należy unikać olejów, tłuszczów i substancji agresywnych (np. silne domowe środki czyszczące), gdyż mogą zniszczyć powierzchnię materiału. Ich użycie może doprowadzić też do usunięcia plastyfikatorów i w rezultacie do stwardnienia i skruszenia materiału.

Barwniki i pigmenty mogą trwale zabarwiać winyl. W szczególności materiały tekstylne (np. jeansy, kamizelki czy paski), mogą zawierać silne pigmenty których po migracji nie można całkowicie usunąć.

Powłoka
100% Winył

Nośnik
100% Poliester Hi-Loft 2™

Waga
685 g/m²

Szerokość rolki
137 cm

Odporność na ścieranie
300 000 cykli Martindale'a
(EN ISO 12947-2:1999)

Odporność na światło
Xenontest (DIN 54004)-7

Trudnozapałność

- EN 1021 Part 1 & 2: 2015
- EN 71-2:2006+A1:2007
- DIN 4102 B2
- NF P 92-503/M2
- UNI 9175 (1987) / UNI 9175/FA1 (1994) Classe 1.IM
- (MED) Council Directive 96/98 EC on marine equipment
- IMO A 652 (16) Annex I, 8,2 and 8,3

Inne

- EN 71-3:2006+A1:2007

Czyszczenie



Dopuszcza się występowanie różnic odcieni pomiędzy poszczególnymi partiami produkcyjnymi.

de:

PERMABLOCK ist geprüfte Schutzschicht, die eine starke und effektive Barriere gegen die wichtigsten Probleme in der Hotelbranche und Krankenhauswesen ausmacht.

Man sollte Öle und starke Reinigungsmittel vermeiden. Sie können die Oberfläche des Stoffes beschädigen. Diese Beschädigung kann Entfernen von Weichmachern verursachen und zu Verhärtung des Stoffes führen.

Farbstoffe und Pigmente können Vinyl verfärben, insbesondere Textilien, die starke Pigmente beinhalten (wie Jeanshosen, Westen, Gürtel), welche völlig nicht entfernt werden können.

Oberfläche
100% Vinyl

Vinyl Träger
100% Polyester Hi-Loft 2™

Gewicht
685 g/m²

Rollenbreite
137 cm

Scheuerfestigkeit
300 000 Zyklen Martindale
(EN ISO 12947-2:1999)

Lichtechtheit
Xenontest (DIN 54004)-7

Feuersicherung

- EN 1021 Part 1 & 2: 2015
- EN 71-2:2006+A1:2007
- DIN 4102 B2
- NF P 92-503/M2
- UNI 9175 (1987) / UNI 9175/FA1 (1994) Classe 1.IM
- (MED) Council Directive 96/98 EC on marine equipment
- IMO A 652 (16) Annex I, 8,2 and 8,3

Andere

- EN 71-3:2006+A1:2007

Reinigung



Farbtonunterschiede zwischen einzelnen Produktionschargen sind zulässig.

en:

PERMABLOCK is proven vinyl protective coating, engineered to create a tough effective barrier against the biggest problems encountered in contract, healthcare and hospitality environments.

Avoid contact with oils, fats or aggressive substances (e.g. strong household cleaners). These may damage the surface may lead to the extraction of plasticizers and consequently a rigidification of the material.

Dyestuffs and colorant may discolor vinyl. Especially textiles can contain strong colorants (e.g. jeans, jackets or belts) which possibly cannot be removed completely.

Surface
100% Vinyl

Vinyl Backing
100% Polyester Hi-Loft 2™

Weight
685 g/m²

Roll width
137 cm

Fastness to Rubbing
300 000 Martindale cycles
(EN ISO 12947-2:1999)

Light Fastness
Xenontest (DIN 54004)-7

Flammability

- EN 1021 Part 1 & 2: 2015
- EN 71-2:2006+A1:2007
- DIN 4102 B2
- NF P 92-503/M2
- UNI 9175 (1987) / UNI 9175/FA1 (1994) Classe 1.IM
- (MED) Council Directive 96/98 EC on marine equipment
- IMO A 652 (16) Annex I, 8,2 and 8,3

Other

- EN 71-3:2006+A1:2007

Cleaning

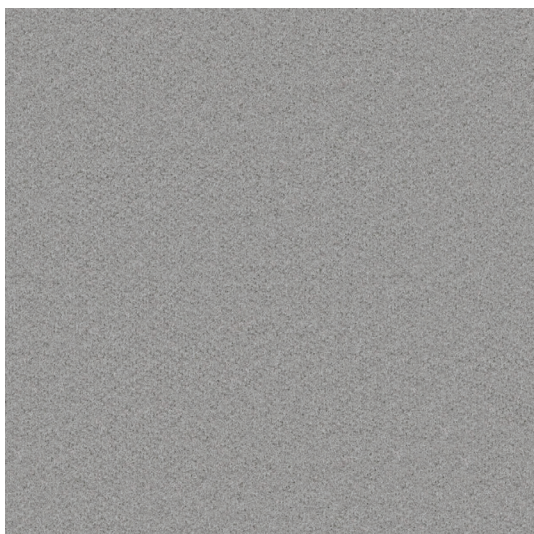


Shade differences between individual production batches are allowed.

synergy SD

* standardowa oferta Bejot
Bejots Standardangebot
Standard Bejot offer

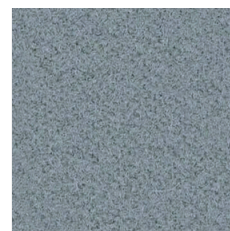
edition: 04.2021
price group: 3



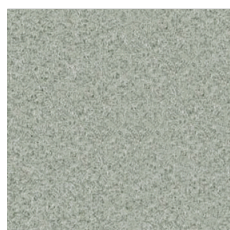
LDS20



LDS08*



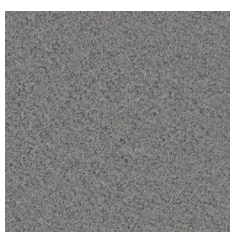
LDS21*



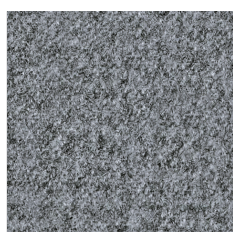
LDS19



LDS32



LDS31



LDS16*



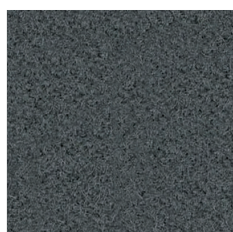
LDS24



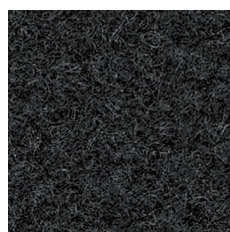
LDS33



LDS35*



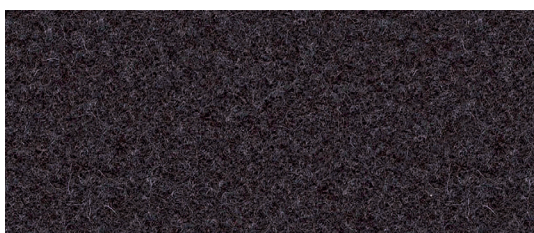
LDS29



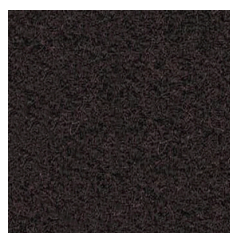
LDS17*



LDS25



LDS34



LDS26



LDS27

Zajęcia kolorów produktów na stronie,
mogą odbiegać od rzeczywistych.

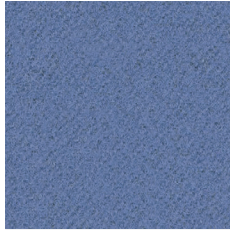
Colours of products presented on this
website may differ from the actual colours.

Die Bildern der Farben der Produkte auf der
Website können vom Original abweichen.

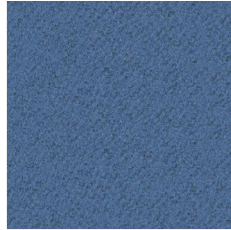
synergy SD

* standardowa oferta Bejot
Bejots Standardangebot
Standard Bejot offer

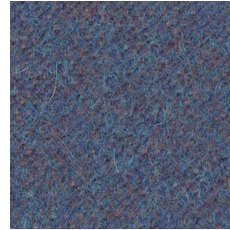
edition: 04.2021
price group: 3



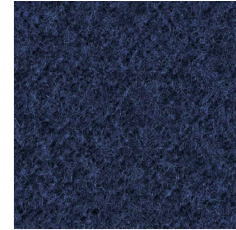
LDS65



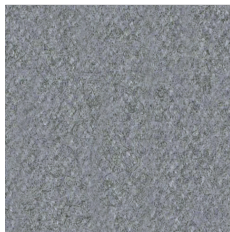
LDS63*



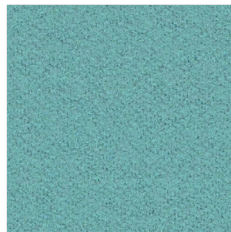
LDS64



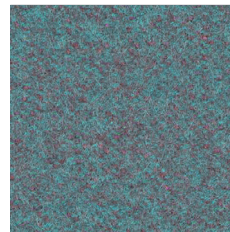
LDS62*



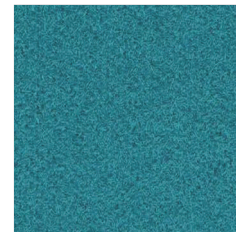
LDS05



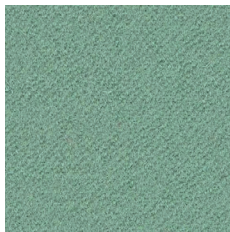
LDS55*



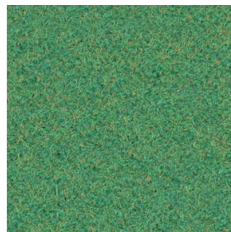
LDS56*



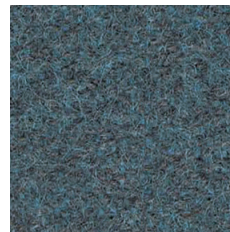
LDS57*



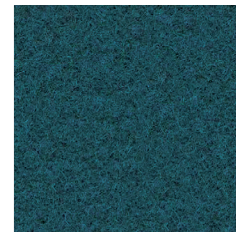
LDS54



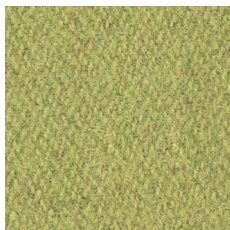
LDS53



LDS58



LDS59*



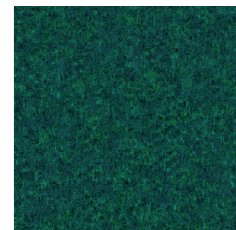
LDS46*



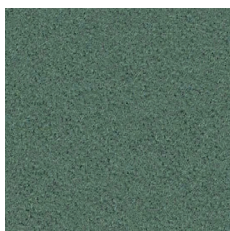
LDS47*



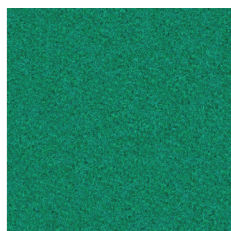
LDS48



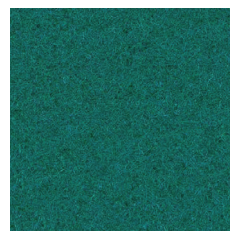
LDS50



LDS49



LDS52



LDS51



LDS42

Zajęcia kolorów produktów na stronie,
mogą odbiegać od rzeczywistych.

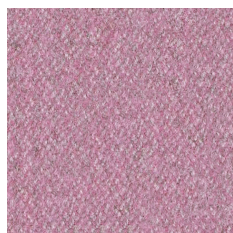
Colours of products presented on this
website may differ from the actual colours.

Die Bildern der Farben der Produkte auf der
Website können vom Original abweichen.

synergy SD

* standardowa oferta Bejot
Bejots Standardangebot
Standard Bejot offer

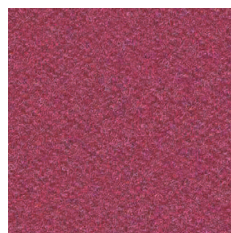
edition: 04.2021
price group: 3



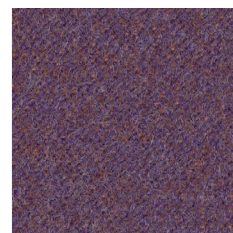
LDS07



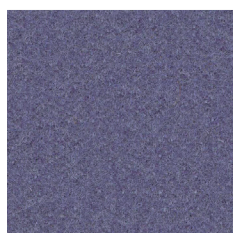
LDS72



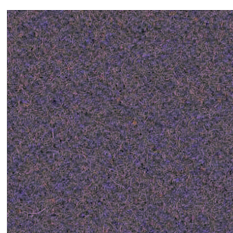
LDS36



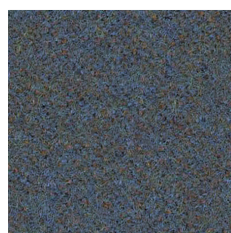
LDS66



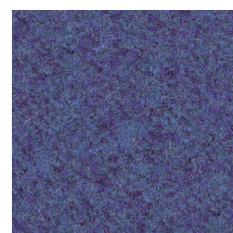
LDS67



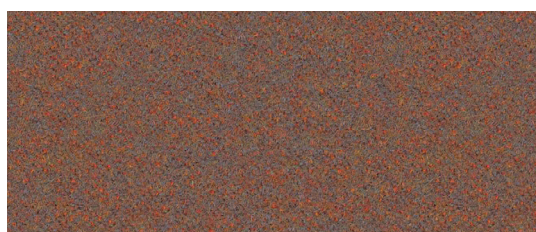
LDS70



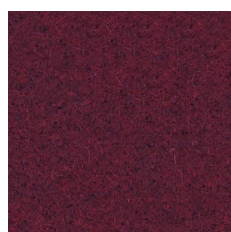
LDS38



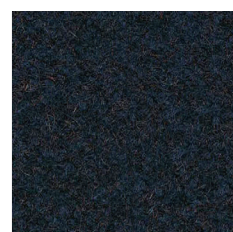
LDS68



LDS76



LDS87



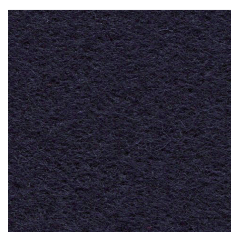
LDS60



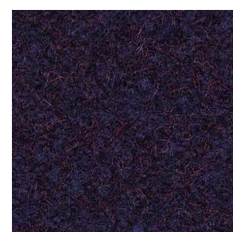
LDS78



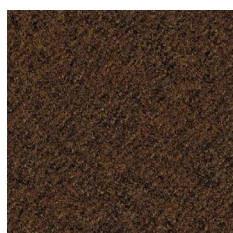
LDS79



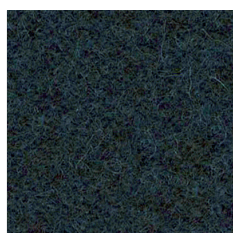
LDS69



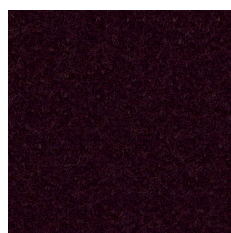
LDS61



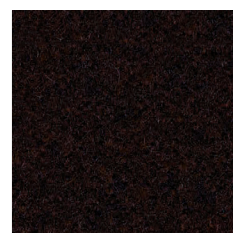
LDS39



LDS41



LDS88



LDS40

Zajęcia kolorów produktów na stronie,
mogą odbiegać od rzeczywistych.

Colours of products presented on this
website may differ from the actual colours.

Die Bildern der Farben der Produkte auf der
Website können vom Original abweichen.

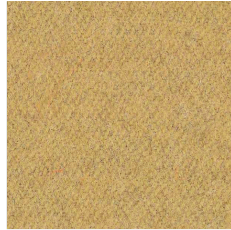
synergy SD

* standardowa oferta Bejot
Bejots Standardangebot
Standard Bejot offer

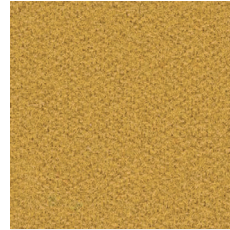
edition: 04.2021
price group: 3



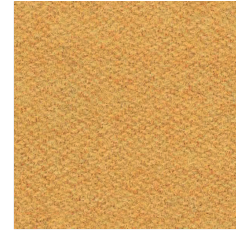
LDS23



LDS45



LDS28*



LDS44*



LDS18



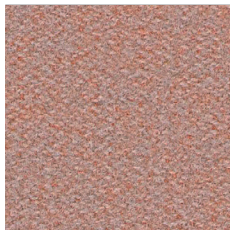
LDS22



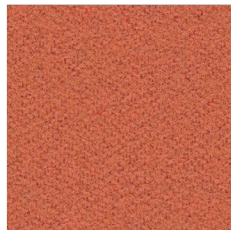
LDS43



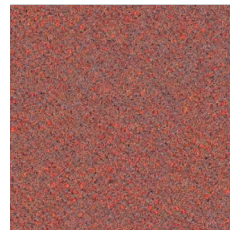
LDS37



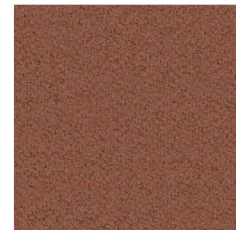
LDS74



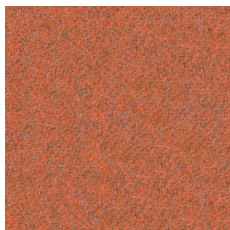
LDS75



LDS73



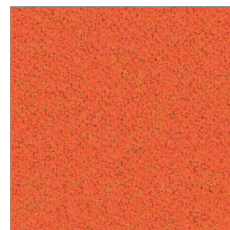
LDS77



LDS83



LDS82*



LDS81*



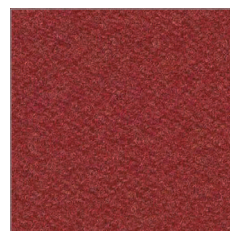
LDS84



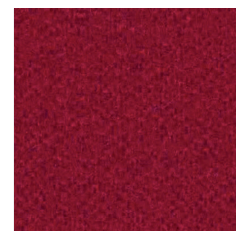
LDS71



LDS80*



LDS85*



LDS86*

Zajęcia kolorów produktów na stronie,
mogą odbiegać od rzeczywistych.

Colours of products presented on this
website may differ from the actual colours.

Die Bildern der Farben der Produkte auf der
Website können vom Original abweichen.

pl:

Skład

95% wełna, 5% poliamid

Waga

400 g/m² ± 5%

Szerokość rolki

140 cm minimum

Odporność na ścieranie

100 000 cykli Martindale'a
(BS EN ISO 12947-2:2016)

Pilling

4 (BS EN ISO 12945-2:2000)

Odporność na światło

5 (BS EN ISO 105-B02:2014-BS6)

Odporność koloru na tarcie

Mokre: 4 (UNI EN ISO 105-X12)
Suche: 4 (UNI EN ISO 105-X12)

Certyfikaty trudnopalności

- BS EN 1021-1:2014
- BS EN 1021-2:2014
- BS 7176 Low Hazard
- UNI 9175:2010 Class 1 IM
- ÖNORM B 3825 & A 3800-1

Czyszczenie

na sucho

Dopuszcza się występowanie różnic odcieni pomiędzy poszczególnymi partiami produkcyjnymi.

de:

Zusammensetzung

95% Schurwolle, 5% Polyamid

Gewicht

400 g/m² ± 5%

Rollenbreite

140 cm minimum

Scheuerfestigkeit

100 000 Zyklen Martindale
(BS EN ISO 12947-2:2016)

Pilling

4 (BS EN ISO 12945-2:2000)

Lichtechtheit

5 (BS EN ISO 105-B02:2014-BS6)

Reibechtheit

Nass: 4 (UNI EN ISO 105-X12)
Trocken: 4 (UNI EN ISO 105-X12)

Feuersicherung

- BS EN 1021-1:2014
- BS EN 1021-2:2014
- BS 7176 Low Hazard
- UNI 9175:2010 Class 1 IM
- ÖNORM B 3825 & A 3800-1

Reinigung

Trockenreinigung

Farbtonunterschiede zwischen einzelnen Produktionschargen sind zulässig.

en:

Composition

95% virgin wool, 5% polyamide

Weight

400 g/m² ± 5%

Roll width

140 cm minimum

Abrasion resistance

100 000 Martindale cycles
(BS EN ISO 12947-2:2016)

Pilling

4 (BS EN ISO 12945-2:2000)

Light fastness

5 (BS EN ISO 105-B02:2014-BS6)

Fastness to rubbing

Wet: 4 (UNI EN ISO 105-X12)
Dry: 4 (UNI EN ISO 105-X12)

Flammability

- BS EN 1021-1:2014
- BS EN 1021-2:2014
- BS 7176 Low Hazard
- UNI 9175:2010 Class 1 IM
- ÖNORM B 3825 & A 3800-1

Cleaning

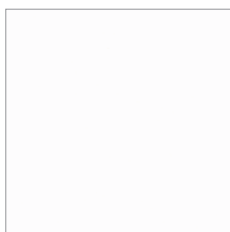
dry cleaning

Shade differences between individual production batches are allowed.

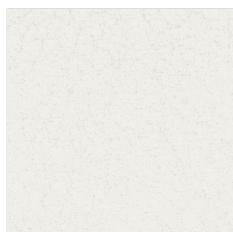
valencia SD

* standardowa oferta Bejot
Bejots Standardangebot
Standard Bejot offer

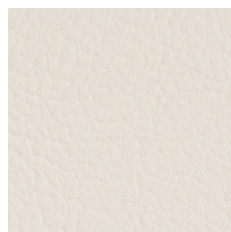
edition: 04.2021
price group: 3



VL 9607



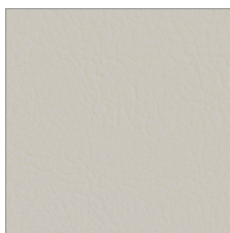
VL 8020



VL 8032



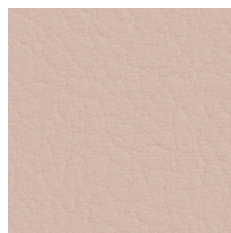
VL 1048



VL 440*



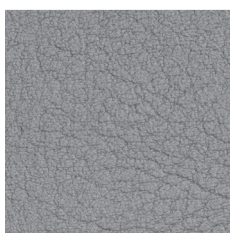
VL 1020



VL 2113



VL 2114



VL 4020



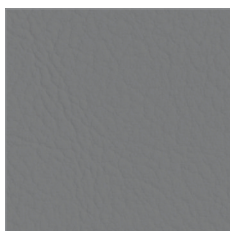
VL 444*



VL 1049



VL 1050



VL 445*



VL 1001



VL 217*



VL 2116



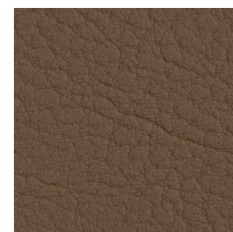
VL 4002



VL 6020



VL 0034



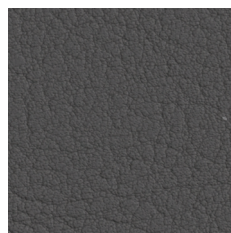
VL 0002



VL 9001



VL 4001



VL 5002



VL 0033

Zdjęcia kolorów produktów na stronie,
mogą odbiegać od rzeczywistych.

Colours of products presented on this
website may differ from the actual colours.

Die Bildern der Farben der Produkte auf der
Website können vom Original abweichen.

valencia SD

* standardowa oferta Bejot
Bejots Standardangebot
Standard Bejot offer

edition: 04.2021
price group: 3



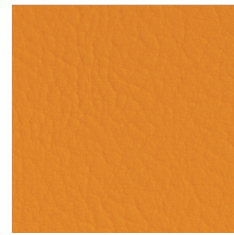
VL 2109



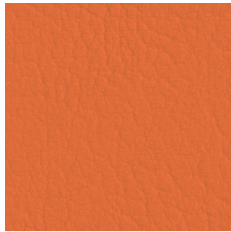
VL 2020



VL 211*



VL 6012



VL 619*



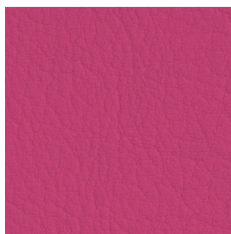
VL 6003



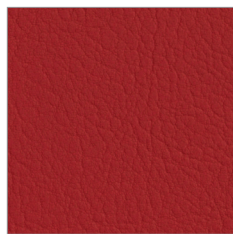
VL 2112



VL 6013



VL 2021



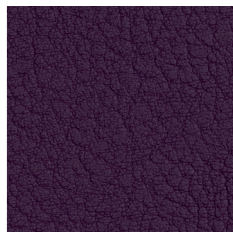
VL 275*



VL 2074



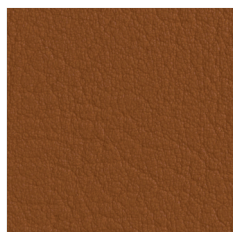
VL 2002



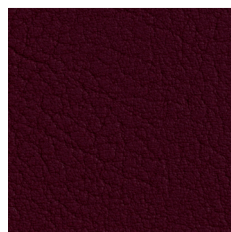
VL 7001



VL 2115



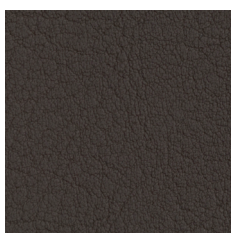
VL 0035



VL 2001



VL 262*



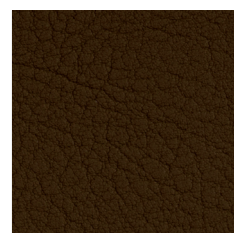
VL 4041



VL 020*



VL 0001



VL 6002

Zjęcia kolorów produktów na stronie,
mogą odbiegać od rzeczywistych.

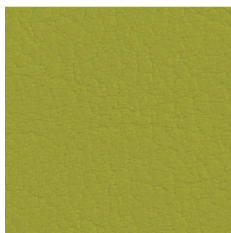
Colours of products presented on this
website may differ from the actual colours.

Die Bildern der Farben der Produkte auf der
Website können vom Original abweichen.

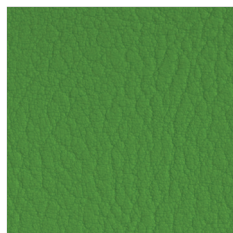
valencia SD

* standardowa oferta Bejot
Bejots Standardangebot
Standard Bejot offer

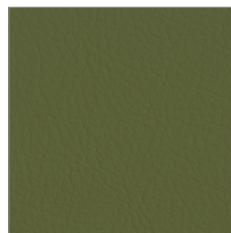
edition: 04.2021
price group: 3



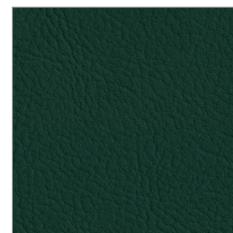
VL 2110



VL 5041



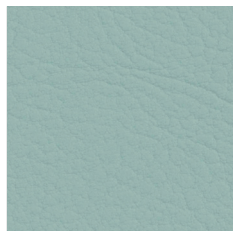
VL 501*



VL 569*



VL 207*



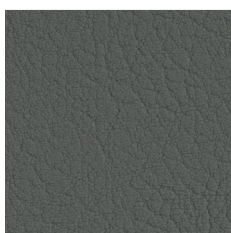
VL 2106



VL 5056



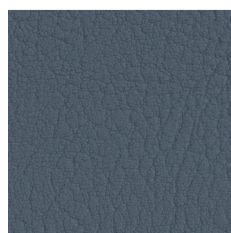
VL 5057



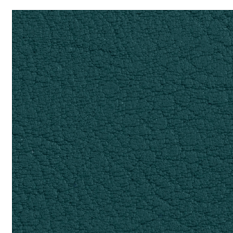
VL 4052



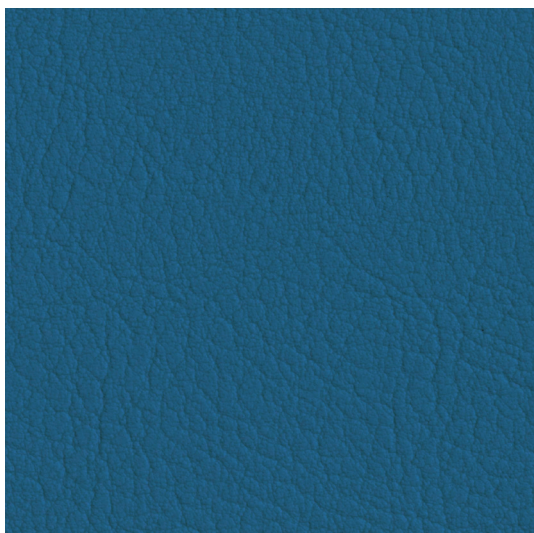
VL 5065



VL 4042



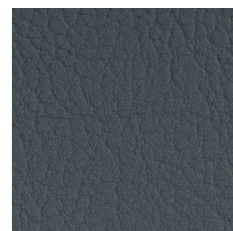
VL 2119



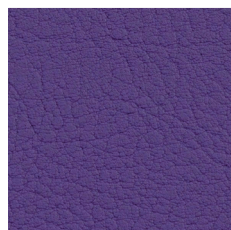
VL 369*



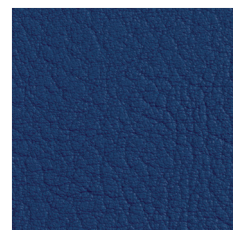
VL 3001



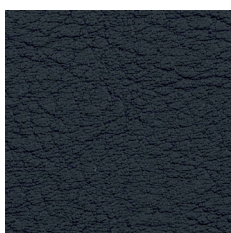
VL 4043



VL 2118



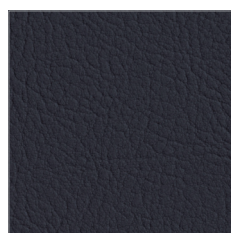
VL 3067



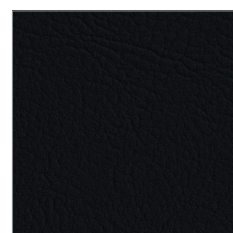
VL 2108



VL 403*



VL 368*



VL 935*

Zajęcia kolorów produktów na stronie,
mogą odbiegać od rzeczywistych.

Colours of products presented on this
website may differ from the actual colours.

Die Bildern der Farben der Produkte auf der
Website können vom Original abweichen.



odporna na ścieranie
exzellente Abriebfestigkeit
abrasion resistant



odporna na promienie UV
lichtechtheit
UV resistant



odporna na mikroorganizmy
antimikrobiell ausgerüstet
mildew resistant



wodoodporna
wasserabweisend
impermeability



odporna na produkty chemiczne
chemikalienbeständig
chemical resistant



odporna na krew i urynę
resistenz gegen Blut und Urin
resistance to blood and urine



trudnozapałna
flammhemmend ausgerüstet
flame retardant



odporna na niskie temperatury
kältebruch resistent
low temperature resistant

pl:

PERMABLOCK to sprawdzona powłoka chroniąca winyl, która tworzy mocną i skuteczną barierę przed największymi problemami występującymi w branży hotelarskiej i służbie zdrowia.

Należy unikać olejów, tłuszczów i substancji agresywnych (np. silne domowe środki czyszczące), gdyż mogą zniszczyć powierzchnię materiału. Ich użycie może doprowadzić też do usunięcia plastyfikatorów i w rezultacie do stwardnienia i skruszenia materiału.

Barwniki i pigmenty mogą trwale zabarwiać winyl. W szczególności materiały tekstylne (np. jeansy, kamizelki czy paski), mogą zawierać silne pigmenty, których po migracji nie można całkowicie usunąć.

Powłoka
100% Winyl

Nośnik
100% Poliester Hi-Loft 2™

Waga
650 g/m²

Szerokość rolki
137 cm

Odporność na ścieranie
300 000 cykli Martindale'a
(UNE EN ISO 14465:2004)
(UNE EN ISO 12947:2 1999)

Odporność na światło
4-5 (EN ISO 105-B02:2014)

Trudnozapałność
• UNE EN 1021-1:2015
• UNE EN 1021-2:2015
• DIN 4102 B2

Czyszczenie



de:

PERMABLOCK ist geprüfte Schutzschicht, die eine starke und effektive Barriere gegen die wichtigsten Probleme in der Hotelbranche und Krankenhauswesen ausmacht.

Man sollte Öle und starke Reinigungsmittel vermeiden. Sie können die Oberfläche des Stoffes beschädigen. Diese Beschädigung kann Entfernen von Weichmachern verursachen und zu Verhärtung des Stoffes führen.

Farbstoffe und Pigmente können Vinyl verfärben, insbesondere Textilien, die starke Pigmente beinhalten (wie Jeanshosen, Westen, Gürtel), welche völlig nicht entfernt werden können.

Oberfläche
100% Winyl

Vinyl Träger
100% Poliester Hi-Loft 2™

Gewicht
650 g/m²

Rollenbreite
137 cm

Scheuerfestigkeit
300 000 Zyklen Martindale
(UNE EN ISO 14465:2004)
(UNE EN ISO 12947:2 1999)

Lichtechtheit
4-5 (EN ISO 105-B02:2014)

Feuersicherung
• UNE EN 1021-1:2015
• UNE EN 1021-2:2015
• DIN 4102 B2

Reinigung



en:

PERMABLOCK is proven vinyl protective coating, engineered to create a tough effective barrier against the biggest problems encountered in contract, healthcare and hospitality environments.

Avoid contact with oils, fats or aggressive substances (e.g. strong household cleaners). These may damage the surface may lead to the extraction of plasticizers and consequently a rigidification of the material.

Dyestuffs and colorant may discolor vinyl. Especially textiles can contain strong colorants (e.g. jeans, jackets or belts) which possibly cannot be removed completely.

Surface
100% Vinyl

Vinyl Backing
100% Polyester Hi-Loft 2™

Weight
650 g/m²

Roll width
137 cm

Fastness to Rubbing
300 000 Martindale cycles
(UNE EN ISO 14465:2004)
(UNE EN ISO 12947:2 1999)

Light Fastness
4-5 (EN ISO 105-B02:2014)

Flammability
• UNE EN 1021-1:2015
• UNE EN 1021-2:2015
• DIN 4102 B2

Cleaning

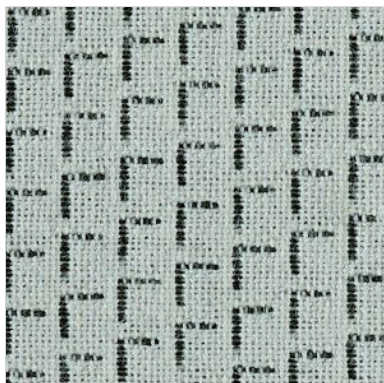




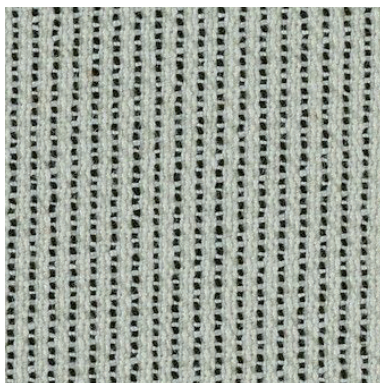
grupa cenowa Preicegruppe price group

heritage SD

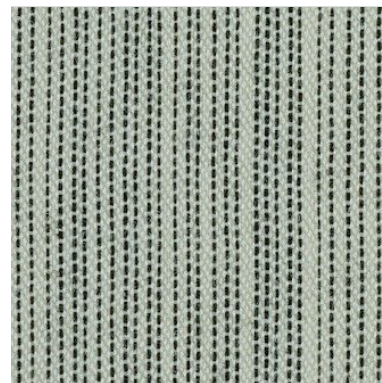
edition: 02.2021
price group: 4



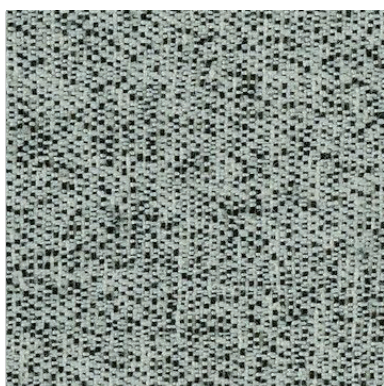
TUCK | HRT2T



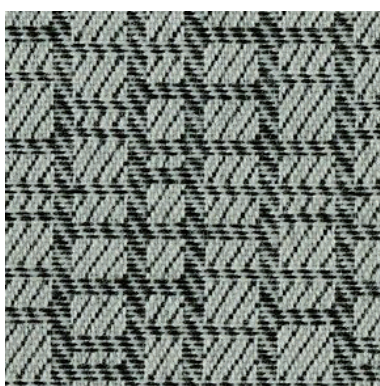
TAILOR | HRT20



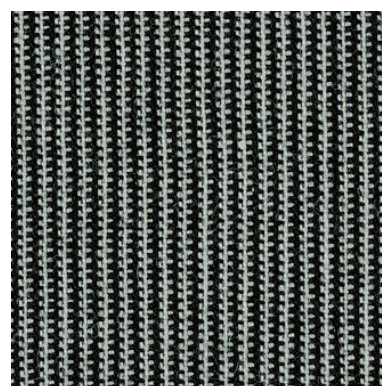
STICH | HRS20



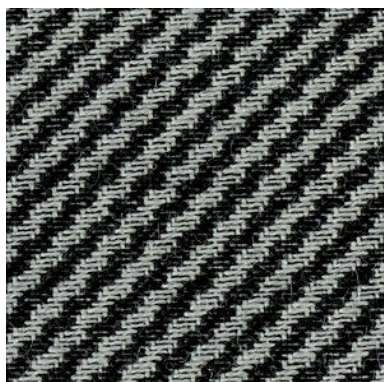
BLEND | HRB20



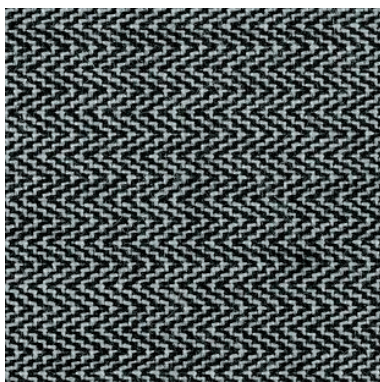
DOBBY | GRD86



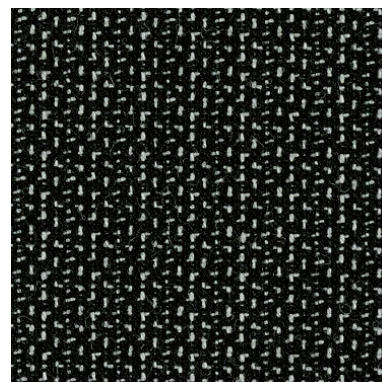
MEDIO | HRM86



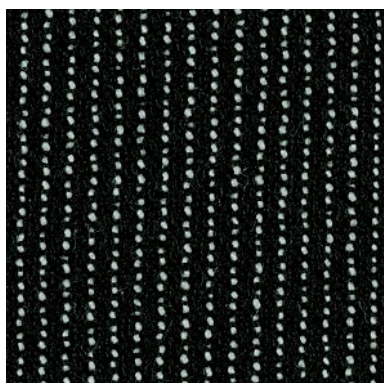
PELO | HRP86



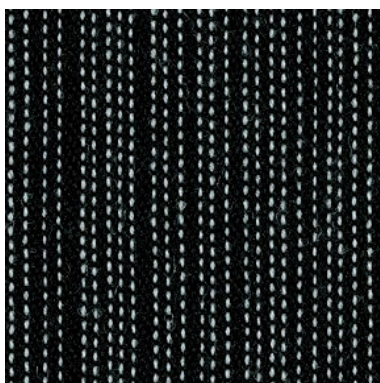
BOTANY | HRB86



KIPPER | HRK88



TAILOR | HRT88



STICH | HRS89



TINT | HRT8T

Zdjęcia kolorów produktów na stronie, mogą odbiegać od rzeczywistych.

Colours of products presented on this website may differ from the actual colours.

Die Bildern der Farben der Produkte auf der Website können vom Original abweichen.

pl:

Skład

- Dobby, Stitch, Tailor, Tint, Tuck:
85% wełna, 15% poliamid
- Blend:
90% wełna, 10% poliamid
- Kipper:
88% wełna, 12% poliamid
- Botany, Medio, Pelo:
89% wełna, 11% poliamid

Waga

310 g/m² – 370 g/m²

Szerokość rolki

150 cm

Odporność na ścieranie

cykli Martindale'a
(EN ISO 12947-2)

- Dobby, Tint:
140 000
- Botany, Stitch:
130 000
- Pelo, Medio, Tuck:
100 000
- Kipper, Tailor:
60 000
- Blend:
45 000

Odporność na światło

5-7 (BS EN ISO 105:B02:2014-BS6)

Odporność koloru na tarcie

Mokre: 3-4 (BS EN ISO 105-X12:2016)
Suche: 4 (BS EN ISO 105-X12:2015)

Certyfikaty trudnopalności

- EN 1021-1:2014
- EN 1021-2:2014
- BS 6852 Crib 5
- IMO FTP Code 2010:Part 8

Czyszczenie



Dopuszcza się występowanie różnic odcieni pomiędzy poszczególnymi partiami produkcyjnymi.

de:

Zusammensetzung

- Dobby, Stitch, Tailor, Tint, Tuck:
85% Schurwolle, 15% Polyamid
- Blend:
90% Schurwolle, 10% Polyamid
- Kipper:
88% Schurwolle, 12% Polyamid
- Botany, Medio, Pelo:
89% Schurwolle, 11% Polyamid

Gewicht

310 g/m² – 370 g/m²

Rollenbreite

150 cm

Scheuerfestigkeit

Zyklen Martindale
(EN ISO 12947-2)

- Dobby, Tint:
≥ 140 000
- Botany, Stitch:
≥ 130 000
- Pelo, Medio, Tuck:
≥ 100 000
- Kipper, Tailor:
≥ 60 000
- Blend:
≥ 45 000

Lichtechtheit

5-7 (BS EN ISO 105:B02:2014-BS6)

Reibechtheit

Nass: 3-4 (BS EN ISO 105-X12:2016)
Trocken: 4 (BS EN ISO 105-X12:2015)

Feuersicherung

- EN 1021-1:2014
- EN 1021-2:2014
- BS 6852 Crib 5
- IMO FTP Code 2010:Part 8

Reinigung



Farbtonunterschiede zwischen einzelnen Produktionschargen sind zulässig.

en:

Composition

- Dobby, Stitch, Tailor, Tint, Tuck:
85% wool, 15% polyamide
- Blend:
90% wool, 10% polyamide
- Kipper:
88% wool, 12% polyamide
- Botany, Medio, Pelo:
89% wool, 11% polyamide

Weight

310 g/m² – 370 g/m²

Roll width

150 cm

Abrasion resistance

Martindale cycles
(EN ISO 12947-2)

- Dobby, Tint:
≥ 140 000
- Botany, Stitch:
≥ 130 000
- Pelo, Medio, Tuck:
≥ 100 000
- Kipper, Tailor:
≥ 60 000
- Blend:
≥ 45 000

Light fastness

5-7 (BS EN ISO 105:B02:2014-BS6)

Fastness to rubbing

Wet: 3-4 (BS EN ISO 105-X12:2016)
Dry: 4 (BS EN ISO 105-X12:2015)

Flammability

- EN 1021-1:2014
- EN 1021-2:2014
- BS 6852 Crib 5
- IMO FTP Code 2010:Part 8

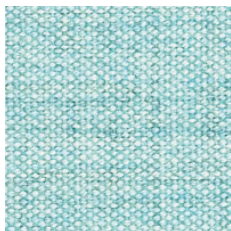
Cleaning



Shade differences between individual production batches are allowed.

remix SD

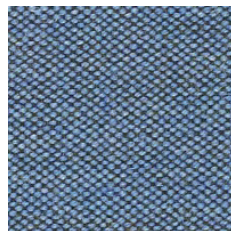
edition: 02.2021
price group: 4



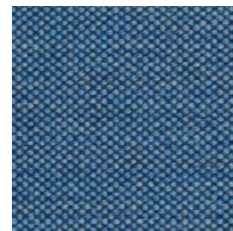
RX823



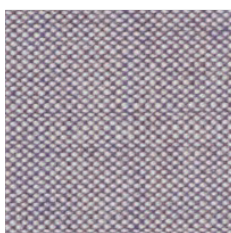
RX816



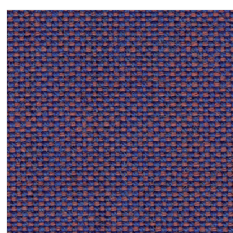
RX743



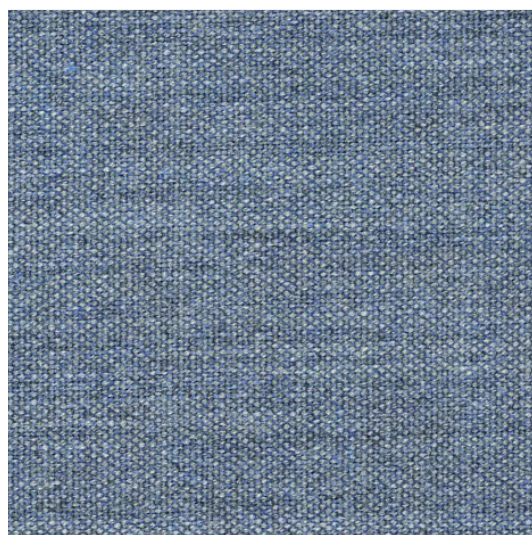
RX762



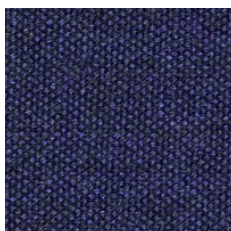
RX682



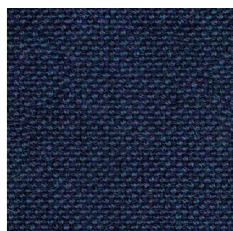
RX686



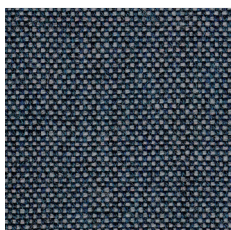
RX733



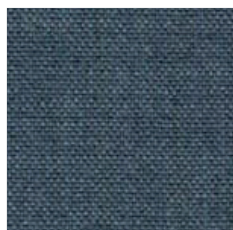
RX773



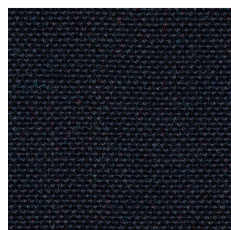
RX866



RX716



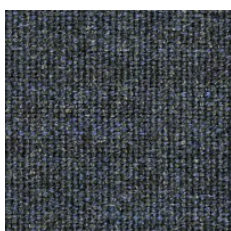
RX836



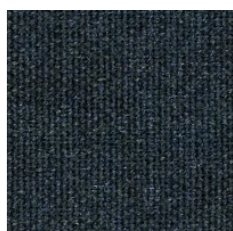
RX796



RX996



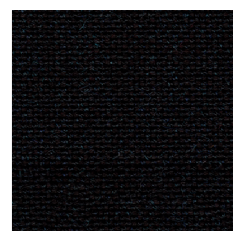
RX753



RX873



RX196



RX296

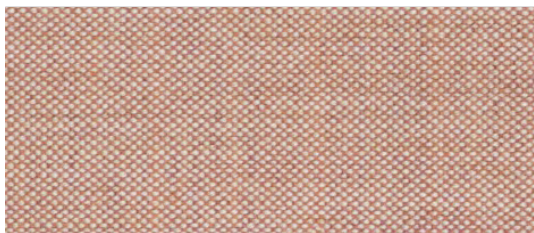
Zajęcia kolorów produktów na stronie,
mogą odbiegać od rzeczywistych.

Colours of products presented on this
website may differ from the actual colours.

Die Bildern der Farben der Produkte auf der
Website können vom Original abweichen.

remix SD

edition: 02.2021
price group: 4



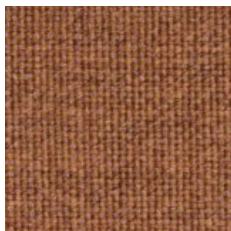
RX612



RX406



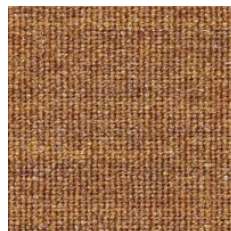
RX326



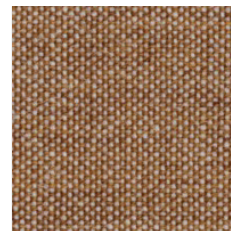
RX452



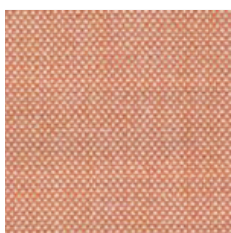
RX422



RX433



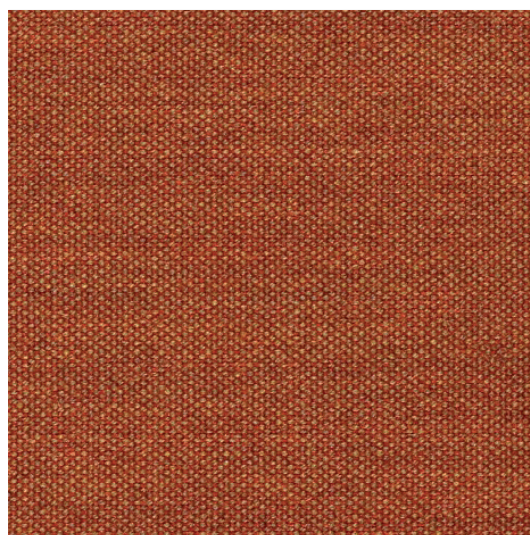
RX252



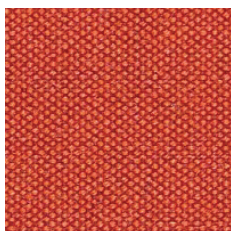
RX516



RX536



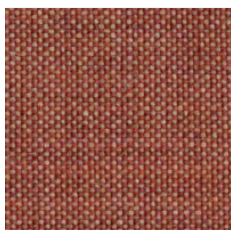
RX443



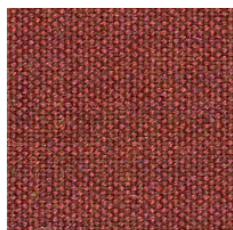
RX643



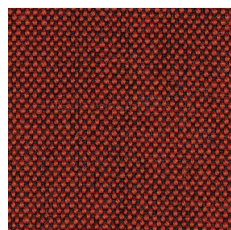
RX543



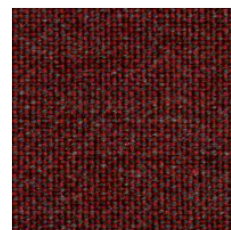
RX632



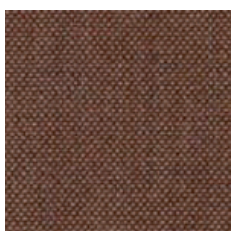
RX653



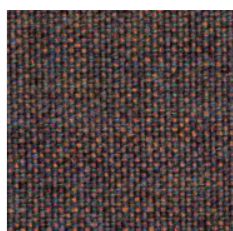
RX566



RX662



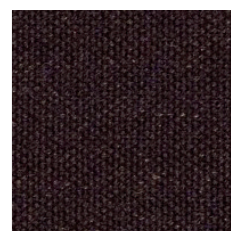
RX346



RX672



RX373



RX783

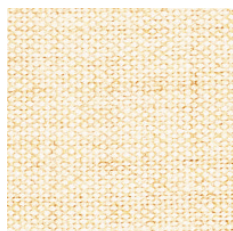
Zajęcia kolorów produktów na stronie, mogą odbiegać od rzeczywistych.

Colours of products presented on this website may differ from the actual colours.

Die Bildern der Farben der Produkte auf der Website können vom Original abweichen.

remix SD

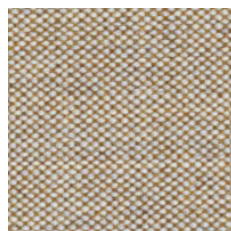
edition: 02.2021
price group: 4



RX113



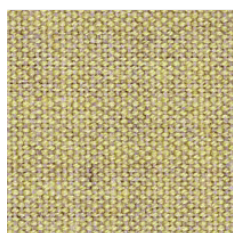
RX223



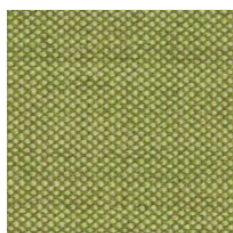
RX242



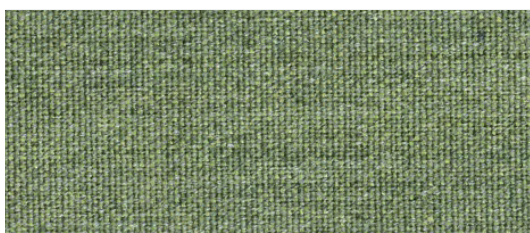
RX233



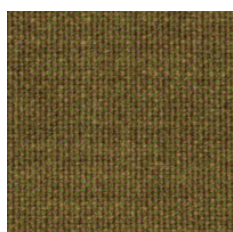
RX923



RX912



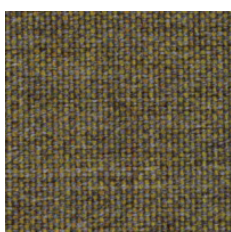
RX933



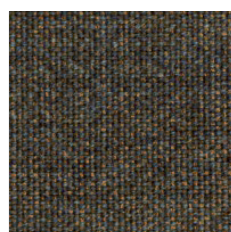
RX412



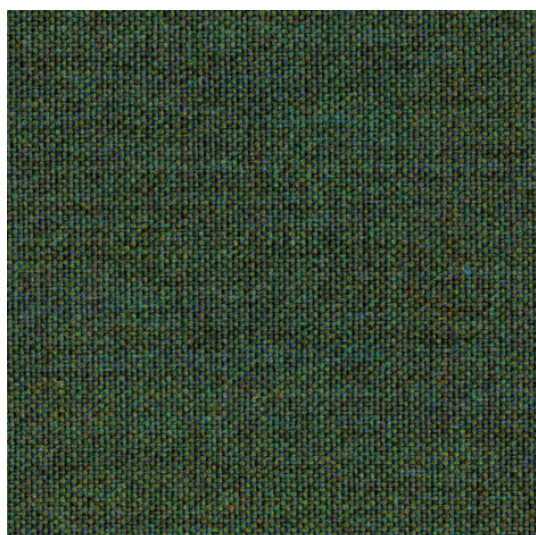
RX942



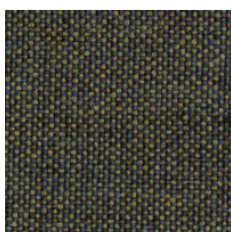
RX962



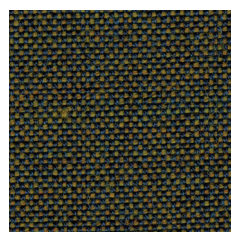
RX954



RX982



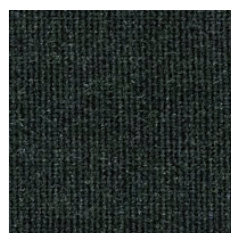
RX842



RX842



RX393



RX973

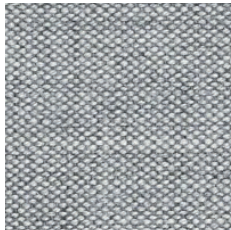
Zajęcia kolorów produktów na stronie,
mogą odbiegać od rzeczywistych.

Colours of products presented on this
website may differ from the actual colours.

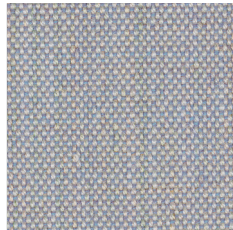
Die Bildern der Farben der Produkte auf der
Website können vom Original abweichen.

remix SD

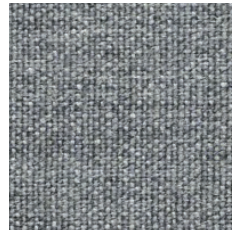
edition: 02.2021
price group: 4



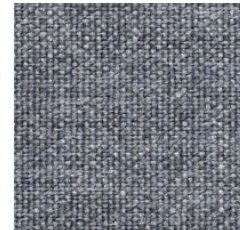
RX123



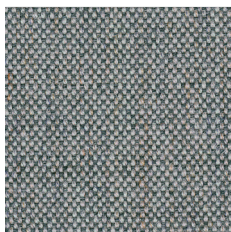
RX606



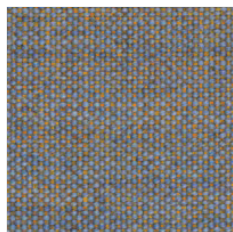
RX133



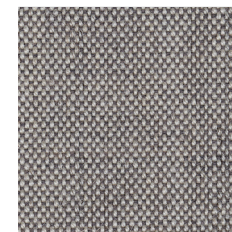
RX143



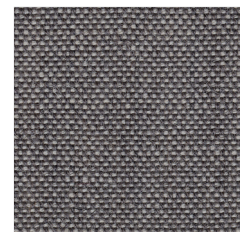
RX906



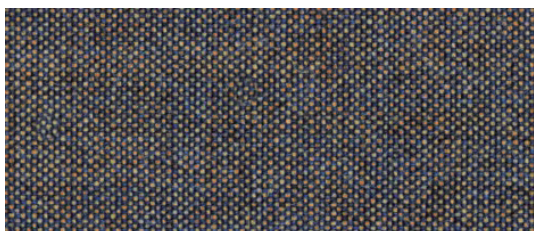
RX722



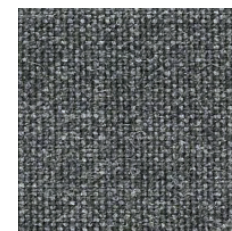
RX126



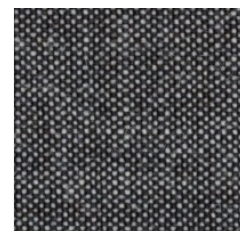
RX136



RX852



RX163



RX152



RX173



RX183



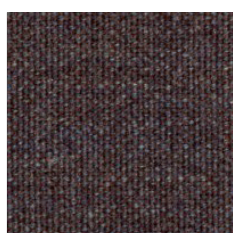
RX276



RX356



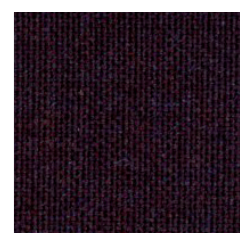
RX286



RX362



RX383



RX692

Zajęcia kolorów produktów na stronie,
mogą odbiegać od rzeczywistych.

Colours of products presented on this
website may differ from the actual colours.

Die Bildern der Farben der Produkte auf der
Website können vom Original abweichen.

pl:

Skład

90% wełna, 10% nylon

Waga

304 g/m²

Szerokość rolki

140 cm

Odporność na ścieranie

100 000 cykli Martindale'a
(EN ISO 12947-2:2016)

Pilling

4 (EN ISO 12945-2:2000)

Odporność na światło

5-7 (EN ISO 105:B02:2014)

Odporność koloru na tarcie

Mokre: 4 (EN ISO 105-X12:2001)
Suche: 4-5 (EN ISO 105-X12:2001)

Certyfikaty trudnopalności

- EN 1021-1/2
- BS 5852 ignition source 3

Czyszczenie



Dopuszcza się występowanie różnic odcieni pomiędzy poszczególnymi partiami produkcyjnymi.

de:

Zusammensetzung

90% Schurwolle, 10% Nylon

Gewicht

304 g/m²

Rollenbreite

140 cm

Scheuerfestigkeit

100 000 Zyklen Martindale
(EN ISO 12947-2:2016)

Pilling

4 (EN ISO 12945-2:2000)

Lichtechtheit

5-7 (EN ISO 105:B02:2014)

Reibechtheit

Nass: 4 (EN ISO 105-X12:2001)
Trocken: 4-5 (EN ISO 105-X12:2001)

Feuersicherung

- EN 1021-1/2
- BS 5852 ignition source 3

Reinigung



Farbtonunterschiede zwischen einzelnen Produktionschargen sind zulässig.

en:

Composition

90% wool, 10% nylon

Weight

304 g/m²

Roll width

140 cm

Abrasion resistance

100 000 Martindale cycles
(EN ISO 12947-2:2016)

Pilling

4 (EN ISO 12945-2:2000)

Light fastness

5-7 (EN ISO 105:B02:2014)

Fastness to rubbing

Wet: 4 (EN ISO 105-X12:2001)
Dry: 4-5 (EN ISO 105-X12:2001)

Flammability

- EN 1021-1/2
- BS 5852 ignition source 3

Cleaning



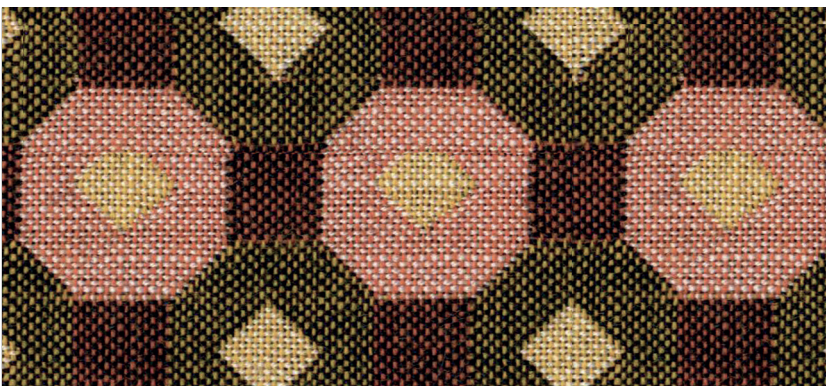
Shade differences between individual production batches are allowed.

:5

grupa cenowa Preicegruppe price group

accessoire SD

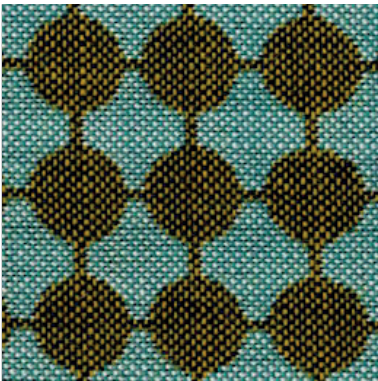
edition: 03.2021
price group: 5



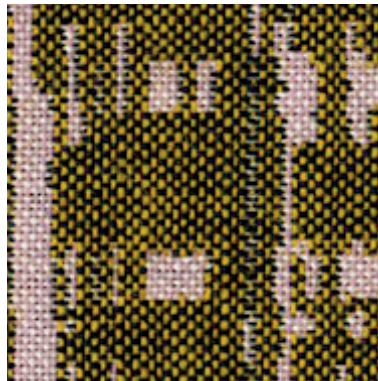
RUBY | AC 312



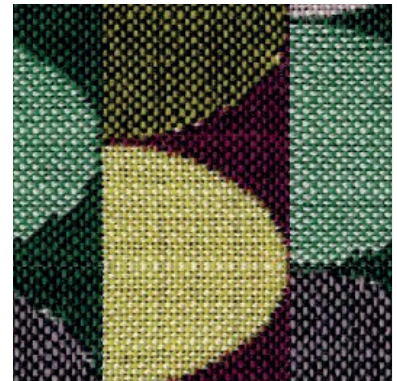
LUX | AC 305



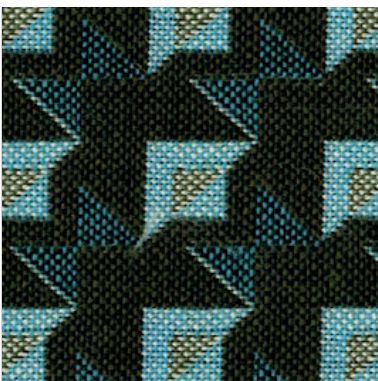
CENT | AC 482



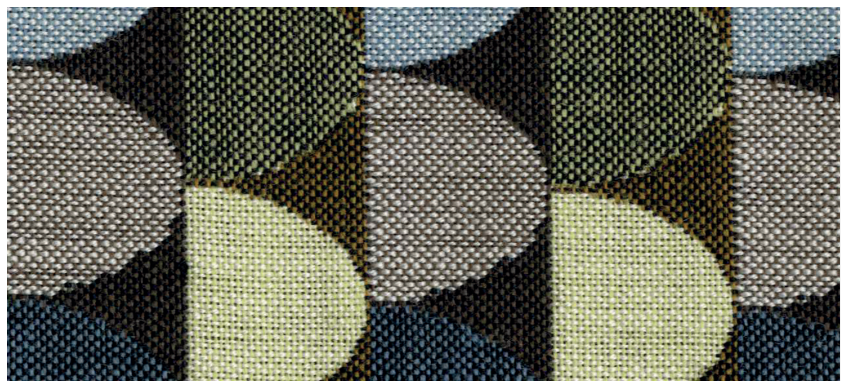
SILK | AC 653



POP | AC 255



BOK | AC 472



RIFF | AC 266

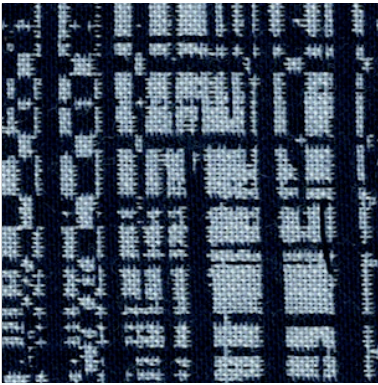
Zdjęcia kolorów produktów na stronie, mogą odbiegać od rzeczywistych.

Colours of products presented on this website may differ from the actual colours.

Die Bildern der Farben der Produkte auf der Website können vom Original abweichen.

accessoire SD

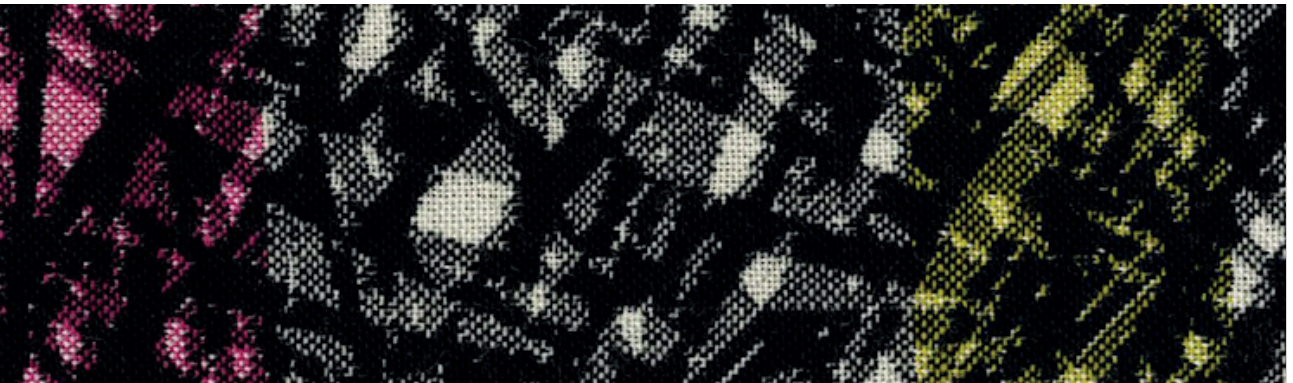
edition: 03.2021
price group: 5



KAJAL | AC 436



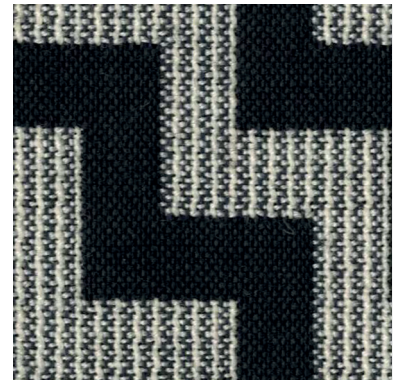
RIVER | AC 442



INFRA | AC 890



NEST | AC 088



ETAGE | AC 880

Zdjęcia kolorów produktów na stronie, mogą odbiegać od rzeczywistych.

Colours of products presented on this website may differ from the actual colours.

Die Bildern der Farben der Produkte auf der Website können vom Original abweichen.

pl:

Skład

85% wełna, 15% poliamid

Waga

350 g/m²
(AC 880: 406g/m²)

Szerokość rolki

150 cm

Odporność na ścieranie

50 000 cykli Martindale'a
(BS EN ISO 12947-2)

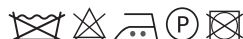
Odporność na światło

5-7 (ISO 105-B02)

Certyfikaty trudnopalności

- EN 1021-1
- EN 1021-2

Czyszczenie



Dopuszcza się występowanie różnic odcieni pomiędzy poszczególnymi partiami produkcyjnymi.

de:

Zusammensetzung

85% Schurwolle, 15% Polyamid

Gewicht

350 g/m²
(AC 880: 406g/m²)

Rollenbreite

150 cm

Scheuerfestigkeit

50 000 Zyklen Martindale
(BS EN ISO 12947-2)

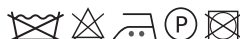
Lichtechtheit

5-7 (ISO 105-B02)

Feuersicherung

- EN 1021-1
- EN 1021-2

Reinigung



Farbtonunterschiede zwischen einzelnen Produktionschargen sind zulässig.

en:

Composition

85% wool, 15% polyamide

Weight

350 g/m²
(AC 880: 406g/m²)

Roll width

150 cm

Abrasion resistance

50 000 Martindale cycles
(BS EN ISO 12947-2)

Light fastness

5-7 (ISO 105-B02)

Flammability

- EN 1021-1
- EN 1021-2

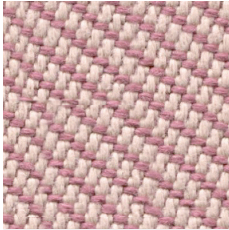
Cleaning



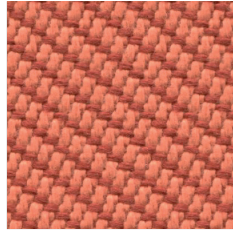
Shade differences between individual production batches are allowed.

oceanic SD

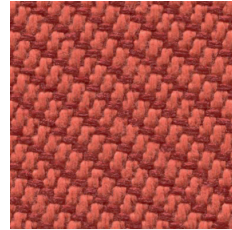
edition: 02.2021
price group: 5



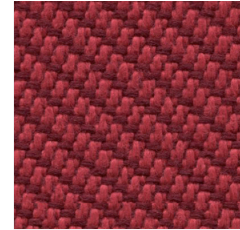
OOC16



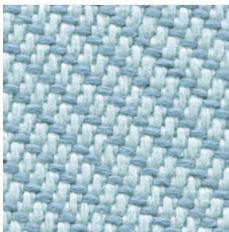
OOC05



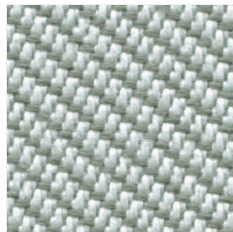
OOC12



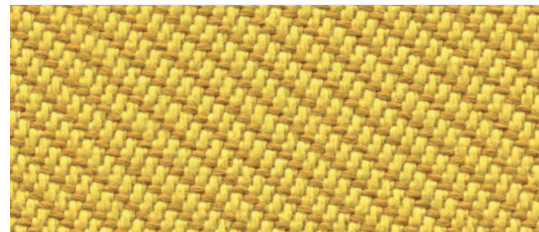
OOC10



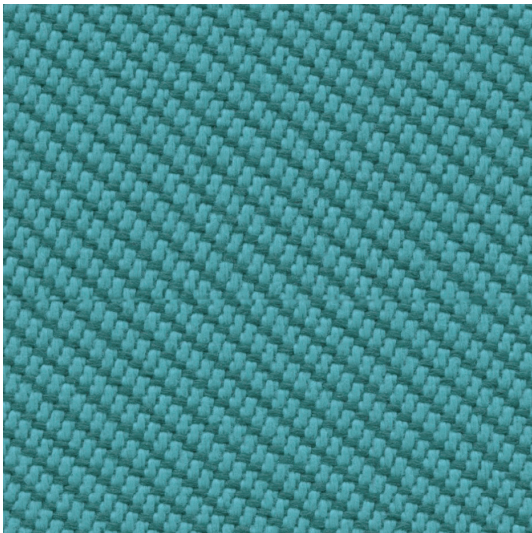
OOC15



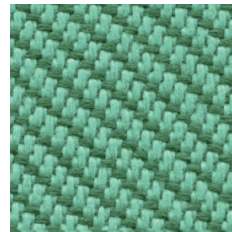
OOC13



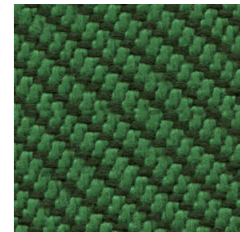
OOC07



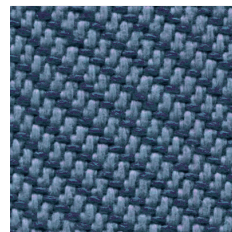
OOC02



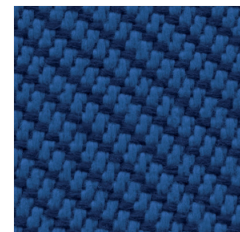
OOC04



OOC03



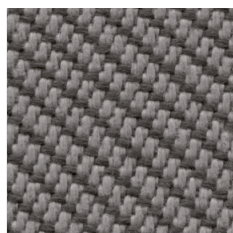
OOC11



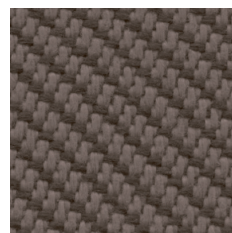
OOC06



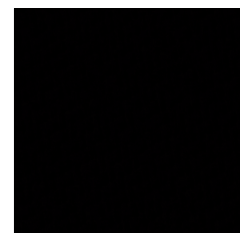
OOC14



OOC08



OOC09



OOC01

Zajęcia kolorów produktów na stronie,
mogą odbiegać od rzeczywistych.

Colours of products presented on this
website may differ from the actual colours.

Die Bildern der Farben der Produkte auf der
Website können vom Original abweichen.



pl:

Skład

100% poliester pochodzący z recyklingu
(z czego w 50% z przędzy Sequal)

Waga

497 g/m² ± 5%

Szerokość rolki

140 cm

Odporność na ścieranie

≥100 000 cykli Martindale'a
(UNI EN ISO 12947-2:2016)

Odporność na światło

5 (ISO 105-B02)
OOC16:4/5 (ISO 105-B02)

Odporność koloru na tarcie

Mokre: 4 (ISO 105-X12)
Suche: 4 (ISO 105-X12)

Certyfikaty trudnopalności

- BS EN 1021-1
- BS EN 1021-2
- BS 7176 (Low Hazard)

Czyszczenie



Dopuszcza się występowanie różnic odcieni
pomiędzy poszczególnymi partiami produkcyjnymi.

de:

Zusammensetzung

100% recyceltes post-consumer Polyester
(enthält 50% Sequal Garn)

Gewicht

497 g/m² ± 5%

Rollenbreite

140 cm

Scheuerfestigkeit

100 000 Zyklen Martindale
(UNI EN ISO 12947-2:2017)

Lichtechtheit

5 (ISO 105-B02)
OOC16:4/5 (ISO 105-B02)

Reibechtheit

Nass: 4 (ISO 105-X12)
Trocken: 4 (ISO 105-X12)

Feuersicherung

- BS EN 1021-1:2014
- BS EN 1021-2:2014
- BS 7176 (Low Hazard)

Reinigung



Farbtonunterschiede zwischen einzelnen
Produktionschargen sind zulässig.

en:

Composition

100% post-consumer recycled polyester
(including 50% Sequal yarn)

Weight

497 g/m² ± 5%

Roll width

140 cm

Abrasion resistance

100 000 Martindale cycles
(UNI EN ISO 12947-2:2017)

Light fastness

5 (ISO 105-B02)
OOC16:4/5 (ISO 105-B02)

Fastness to rubbing

Wet: 4 (ISO 105-X12)
Dry: 4 (ISO 105-X12)

Flammability

- BS EN 1021-1:2014
- BS EN 1021-2:2014
- BS 7176 (Low Hazard)

Cleaning



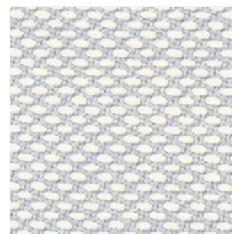
Shade differences between individual
production batches are allowed.

steelcut trio 3 SD

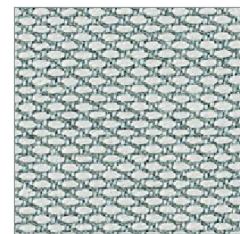
edition: 04.2021
price group: 5



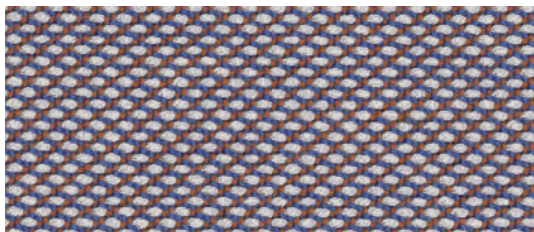
906



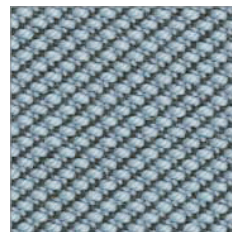
105



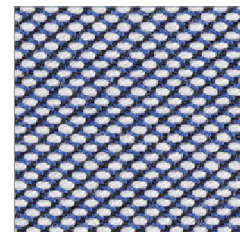
113



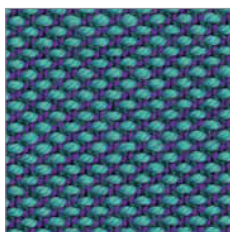
806



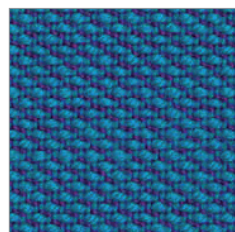
713



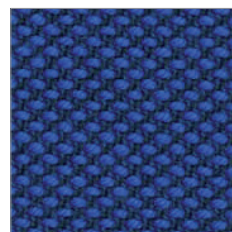
716



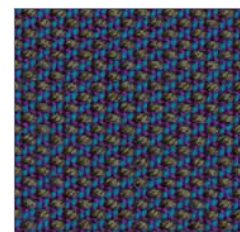
983



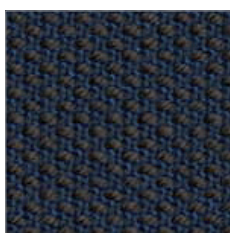
865



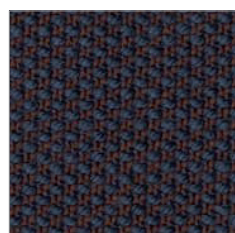
746



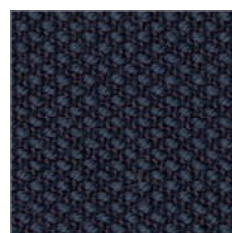
883



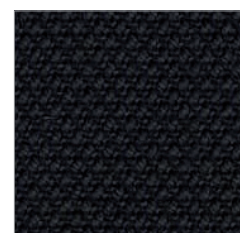
756



776



796



195

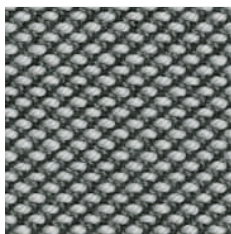
Zajęcia kolorów produktów na stronie,
mogą odbiegać od rzeczywistych.

Colours of products presented on this
website may differ from the actual colours.

Die Bildern der Farben der Produkte auf der
Website können vom Original abweichen.

steelcut trio 3 SD

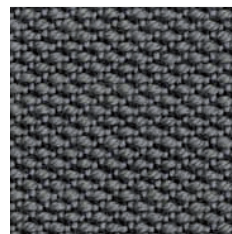
edition: 04.2021
price group: 5



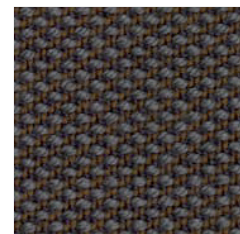
133



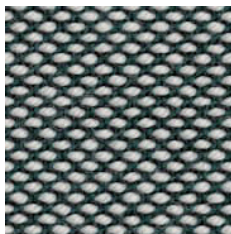
246



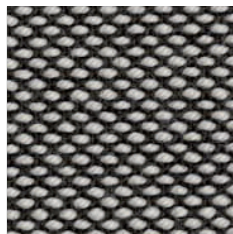
153



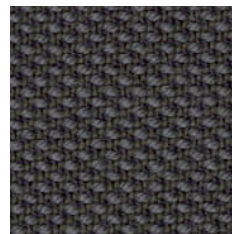
376



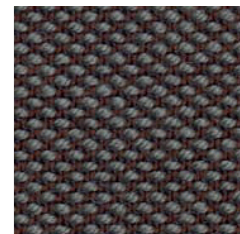
916



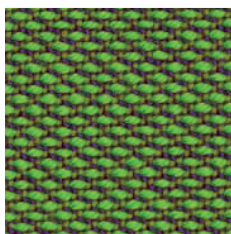
124



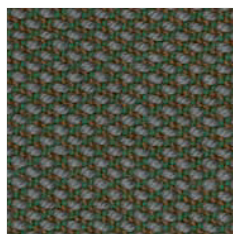
176



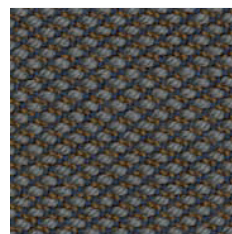
276



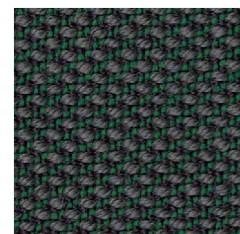
953



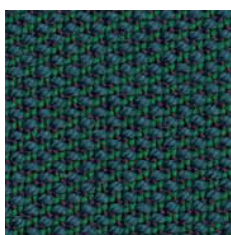
946



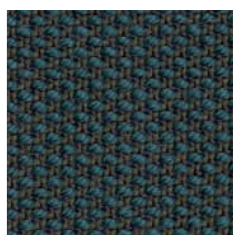
266



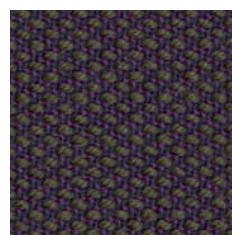
966



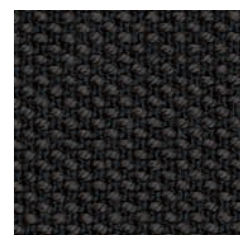
976



996



283



383

Zajęcia kolorów produktów na stronie,
mogą odbiegać od rzeczywistych.

Colours of products presented on this
website may differ from the actual colours.

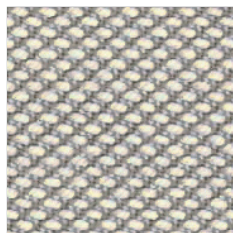
Die Bildern der Farben der Produkte auf der
Website können vom Original abweichen.

steelcut trio 3 SD

edition: 04.2021
price group: 5



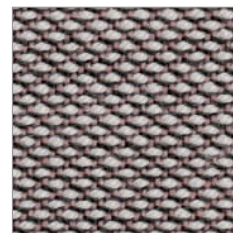
226



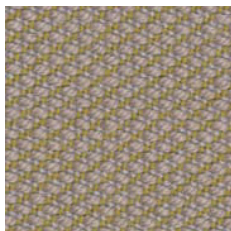
205



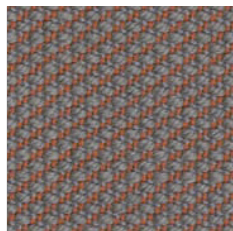
213



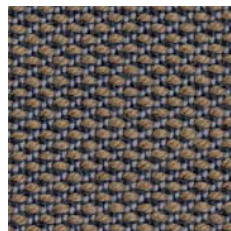
616



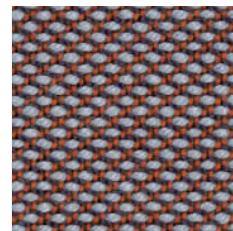
236



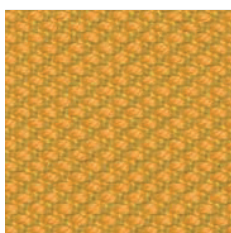
426



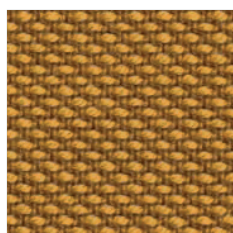
253



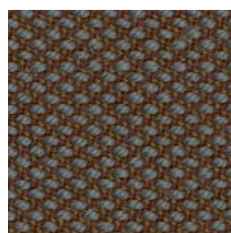
416



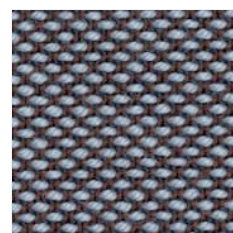
446



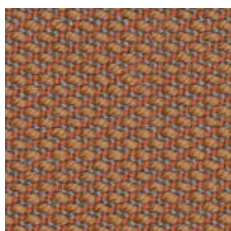
453



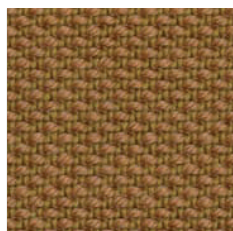
476



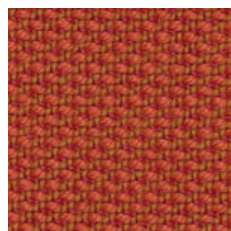
336



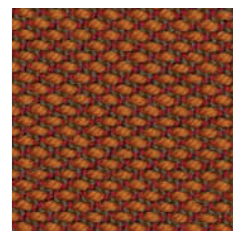
436



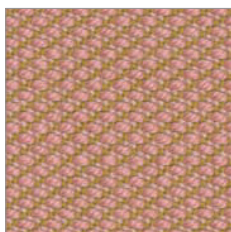
466



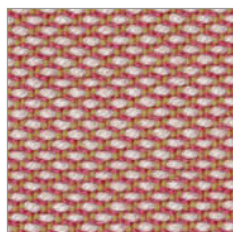
533



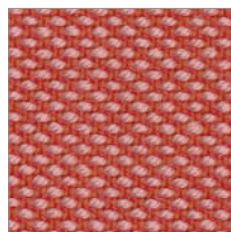
576



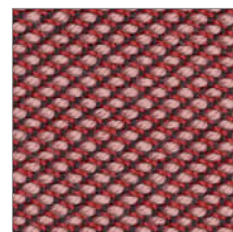
506



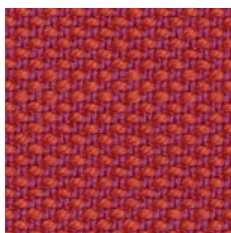
515



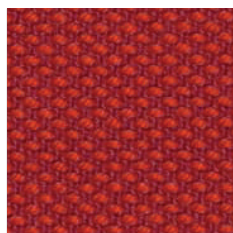
526



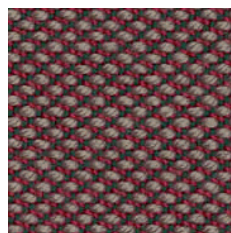
636



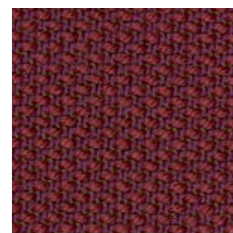
553



666



645



686

Zajęcia kolorów produktów na stronie, mogą odbiegać od rzeczywistych.

Colours of products presented on this website may differ from the actual colours.

Die Bildern der Farben der Produkte auf der Website können vom Original abweichen.

pl:

Skład

90% wełna, 10% poliamid

Waga

550 g/m²

Szerokość rolki

140 cm

Odporność na ścieranie

100 000 cykli Martindale'a
(EN ISO 12947)

Odporność na światło

5-7 (ISO 105-B02)

Pilling

4 (EN ISO 12947-2:2000)

Certyfikaty trudnopalności

- EN 1021-1/2
- BS 5852:2006 (2011) Ignition Source 3
- DIN 4102 B2

Czyszczenie



Dopuszcza się występowanie różnic odcieni pomiędzy poszczególnymi partiami produkcyjnymi.

de:

Zusammensetzung

90% Schurwolle, 10% Polyamid

Gewicht

550 g/m²

Rollenbreite

140 cm

Scheuerfestigkeit

100 000 Zyklen Martindale
(EN ISO 12947)

Lichtechtheit

5-7 (ISO 105-B02)

Pilling

4 (EN ISO 12947-2:2000)

Feuersicherung

- EN 1021-1/2
- BS 5852:2006 (2011) Ignition Source 3
- DIN 4102 B2

Reinigung



Farbtonunterschiede zwischen einzelnen Produktionschargen sind zulässig.

en:

Composition

90% wool, 10% polyamide

Weight

550 g/m²

Roll width

140 cm

Abrasion resistance

100 000 Martindale cycles
(EN ISO 12947)

Light fastness

5-7 (ISO 105-B02)

Pilling

4 (EN ISO 12947-2:2000)

Flammability

- EN 1021-1/2
- BS 5852:2006 (2011) Ignition Source 3
- DIN 4102 B2

Cleaning



Shade differences between individual production batches are allowed.